

N,N-ジメチルホルムアミドのラット及びマウスを用いた
吸入によるがん原性予備試験報告書

試験番号

2 週間 : ラット/0263 ; マウス/0264

1 3 週間 : ラット/0275 ; マウス/0276

FIGURES

F I G U R E S

- FIGURE 1 *N,N*-DIMETHYLFORMAMIDE VAPOR GENERATION SYSTEM AND INHALATION SYSTEM
- FIGURE 2 BODY WEIGHT CHANGES:RAT:MALE(THIRTEEN-WEEK STUDY)
- FIGURE 3 BODY WEIGHT CHANGES:RAT:FEMALE(THIRTEEN-WEEK STUDY)
- FIGURE 4 FOOD CONSUMPTION:RAT:MALE(THIRTEEN-WEEK STUDY)
- FIGURE 5 FOOD CONSUMPTION:RAT:FEMALE(THIRTEEN-WEEK STUDY)
- FIGURE 6 BODY WEIGHT CHANGES:MOUSE:MALE(THIRTEEN-WEEK STUDY)
- FIGURE 7 BODY WEIGHT CHANGES:MOUSE:FEMALE(THIRTEEN-WEEK STUDY)
- FIGURE 8 FOOD CONSUMPTION:MOUSE:MALE(THIRTEEN-WEEK STUDY)
- FIGURE 9 FOOD CONSUMPTION:MOUSE:FEMALE(THIRTEEN-WEEK STUDY)

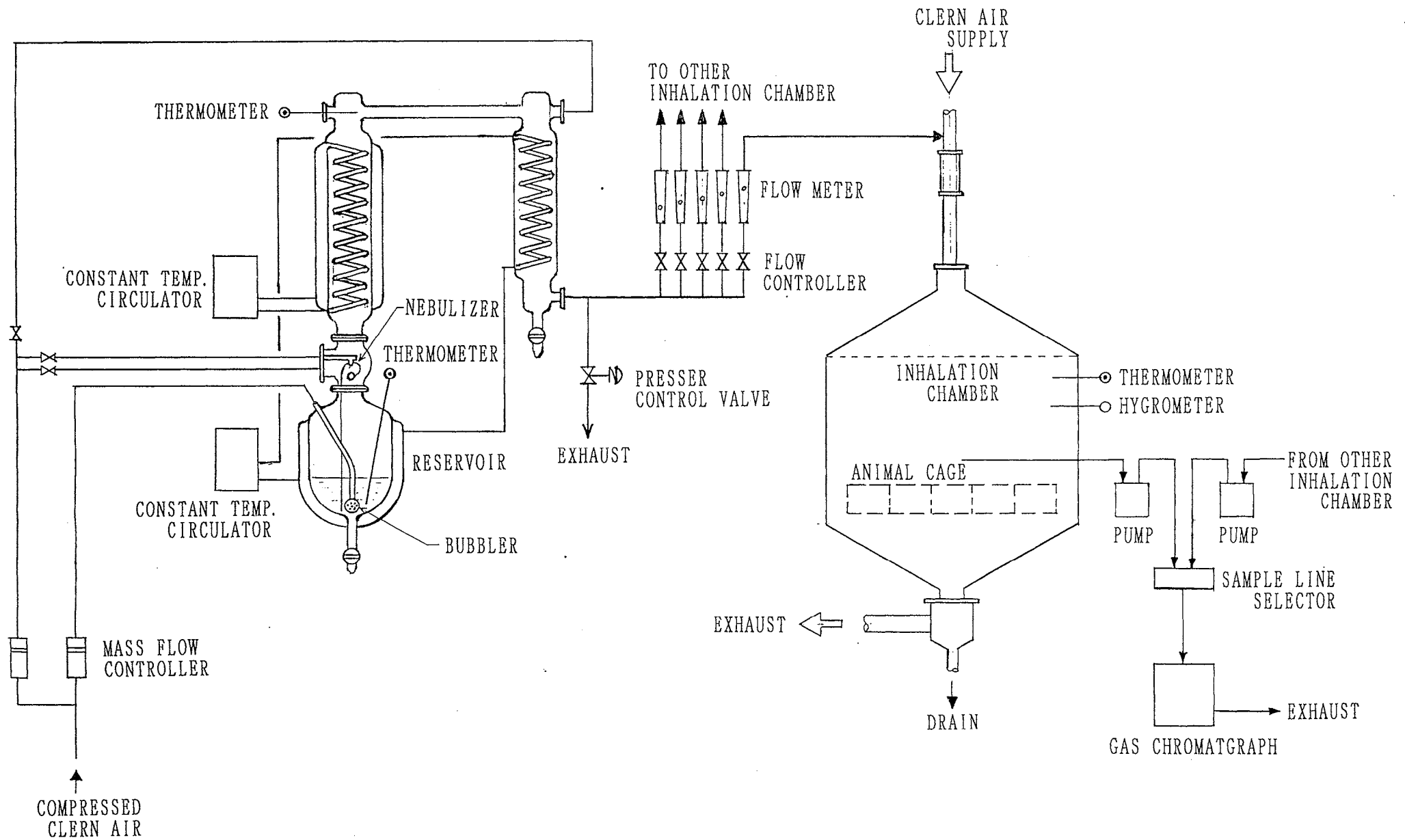


FIGURE 1 *N,N*-DIMETHYLFORMAMIDE VAPOR GENERATION SYSTEM AND INHALATION SYSTEM

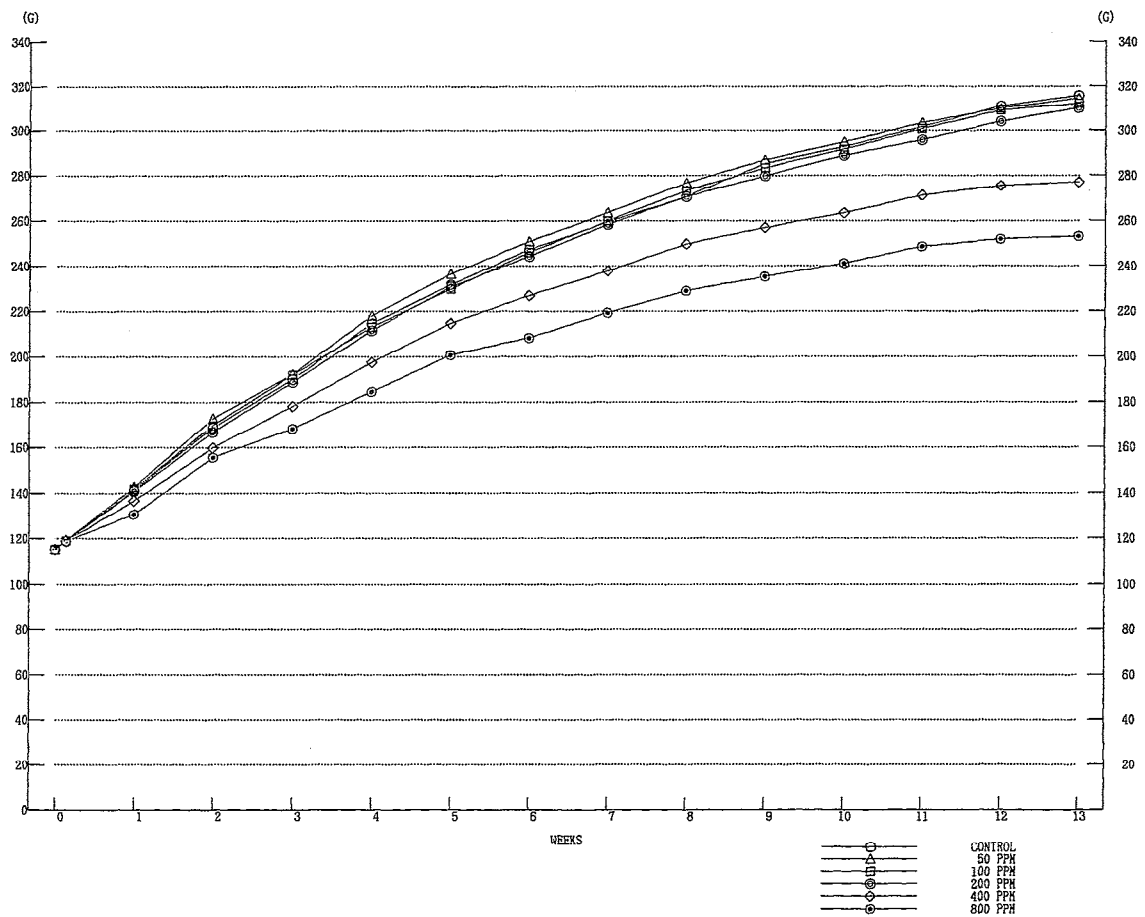


FIGURE 2 BODY WEIGHT CHANGES:RAT:MALE (THIRTEEN-WEEK STUDY)

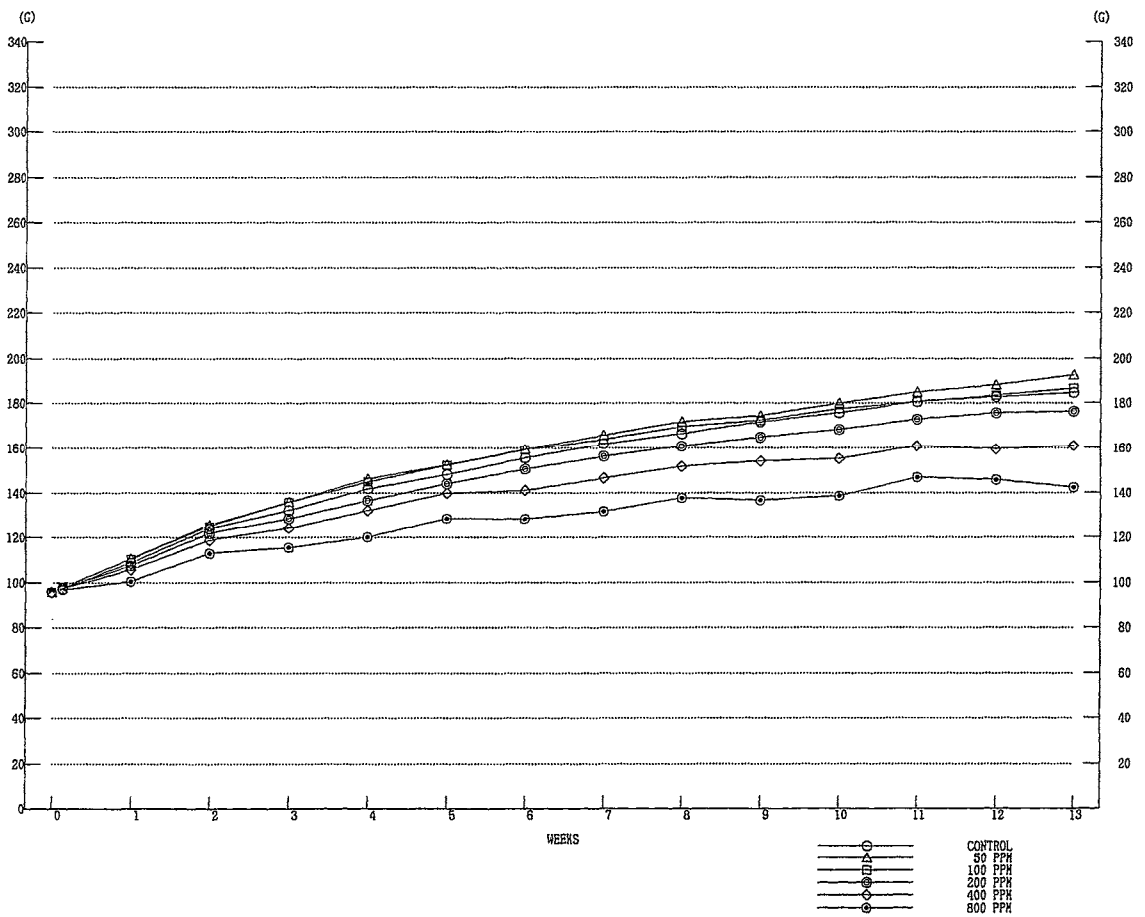


FIGURE 3 BODY WEIGHT CHANGES:RAT:FEMALE (THIRTEEN-WEEK STUDY)

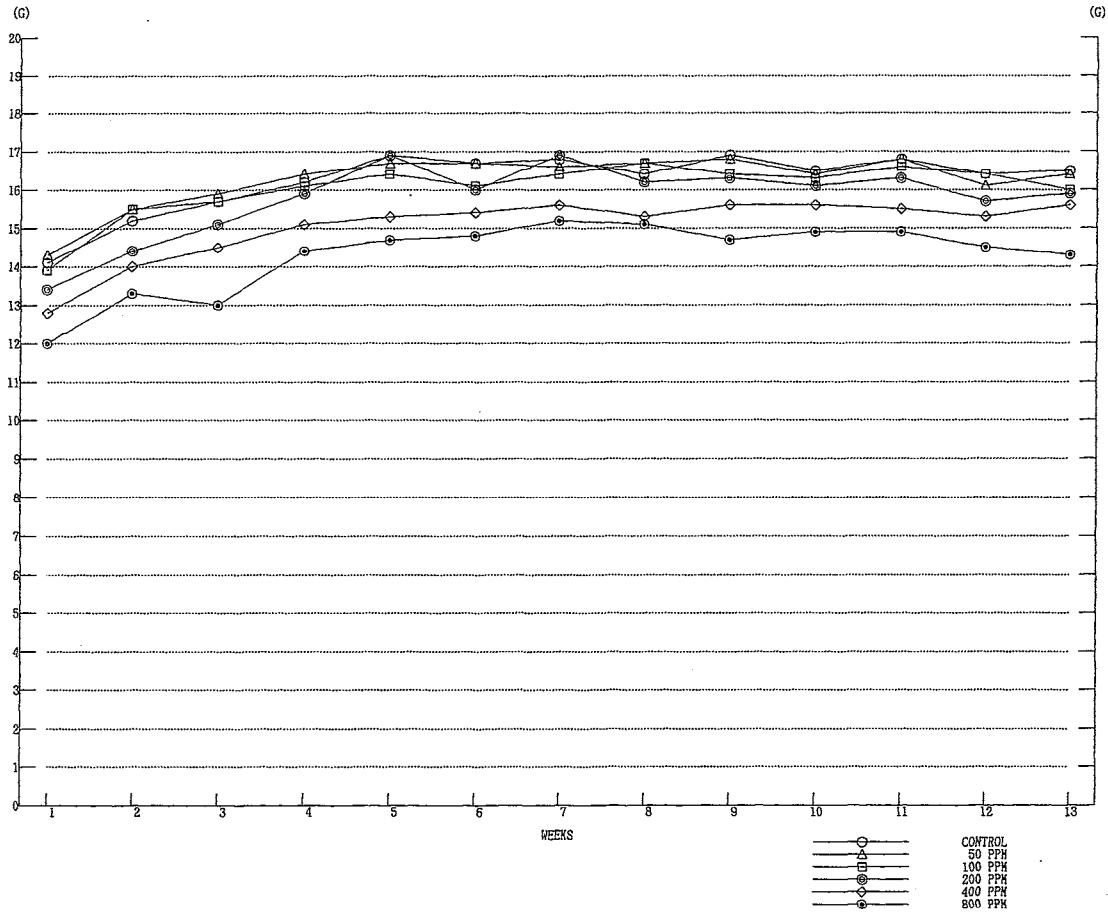


FIGURE 4 FOOD CONSUMPTION: RAT: MALE (THIRTEEN-WEEK STUDY)

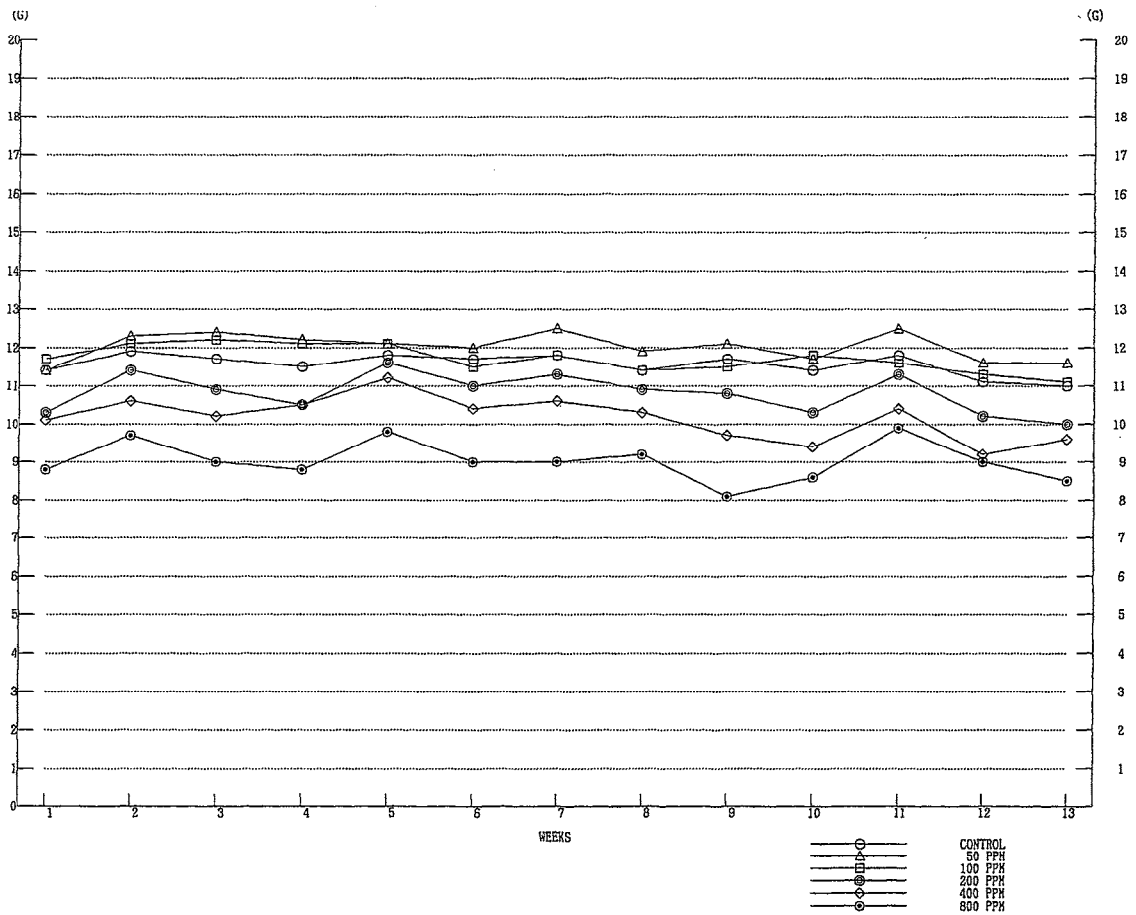


FIGURE 5 FOOD CONSUMPTION: RAT: FEMALE (THIRTEEN-WEEK STUDY)

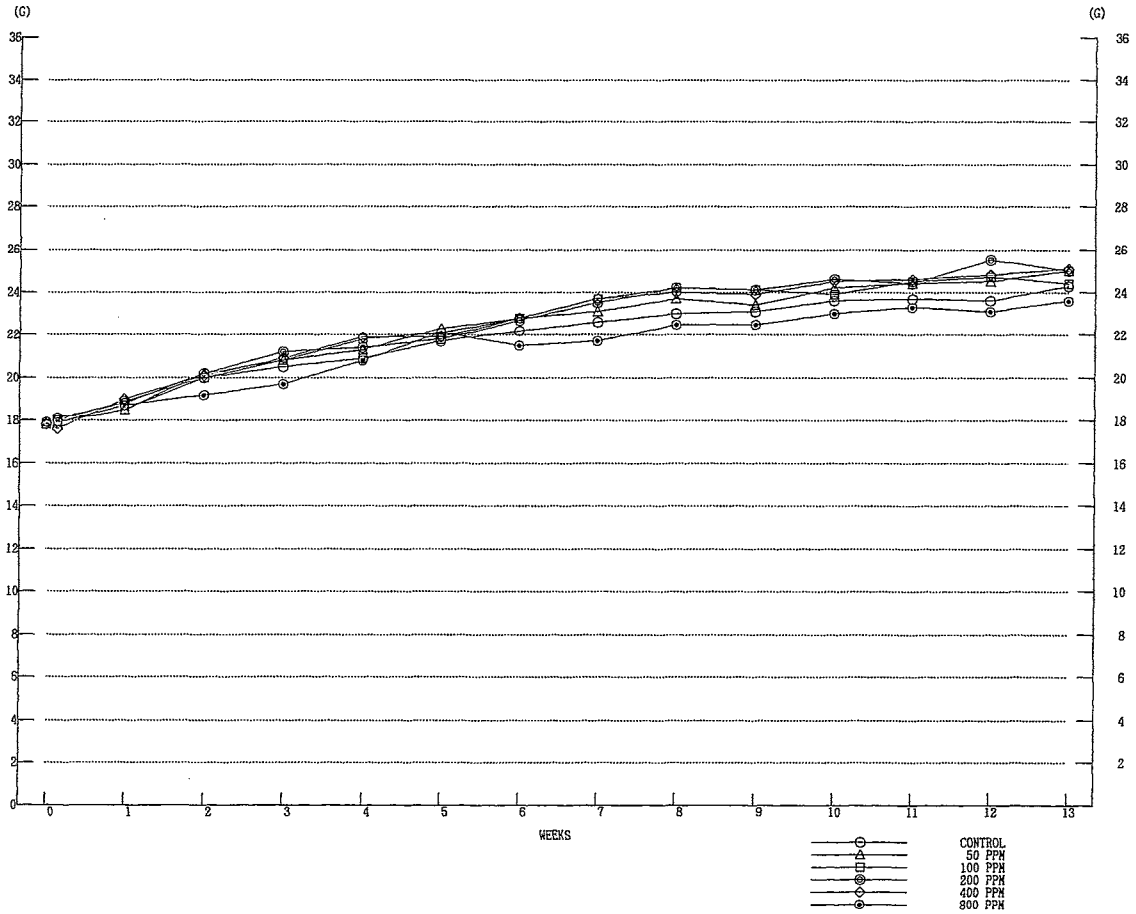


FIGURE 6 BODY WEIGHT CHANGES:MOUSE:MALE (THIRTEEN-WEEK STUDY)

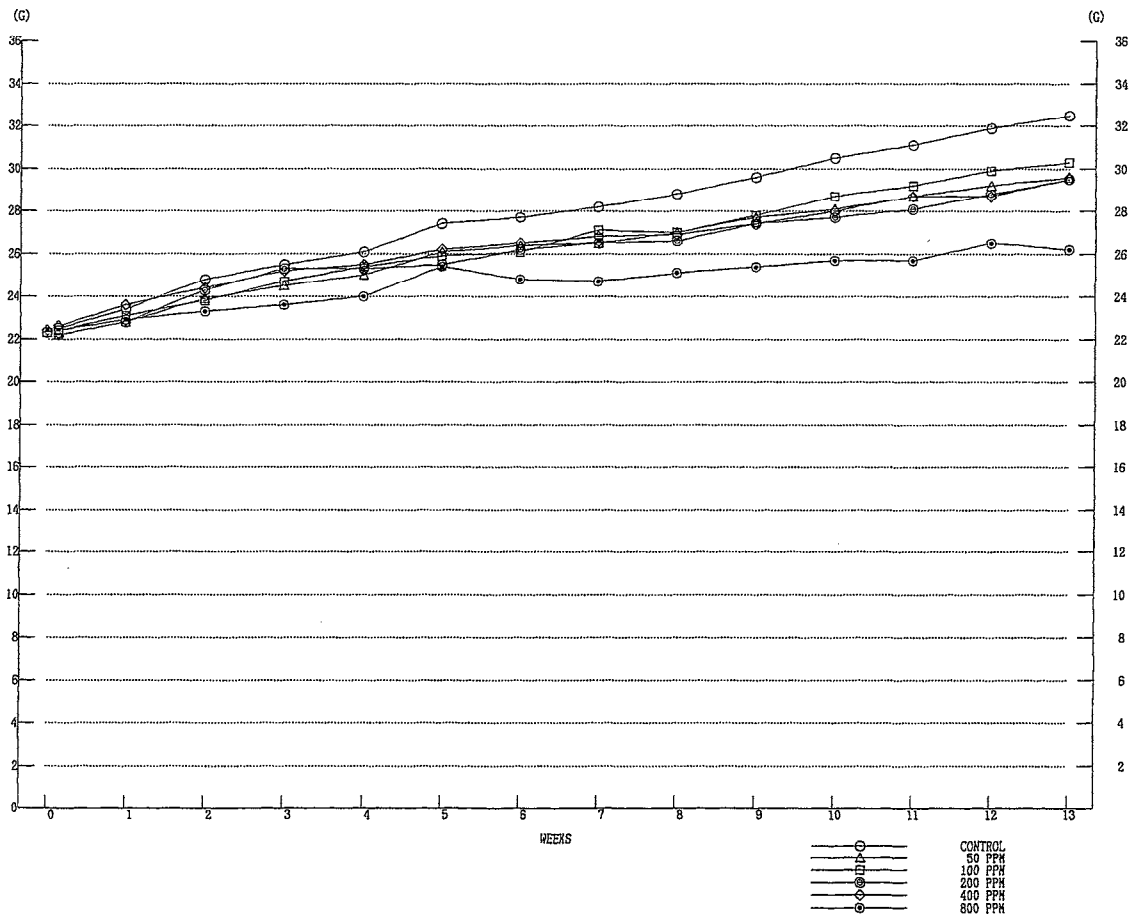


FIGURE 7 BODY WEIGHT CHANGES:MOUSE:FEMALE (THIRTEEN-WEEK STUDY)

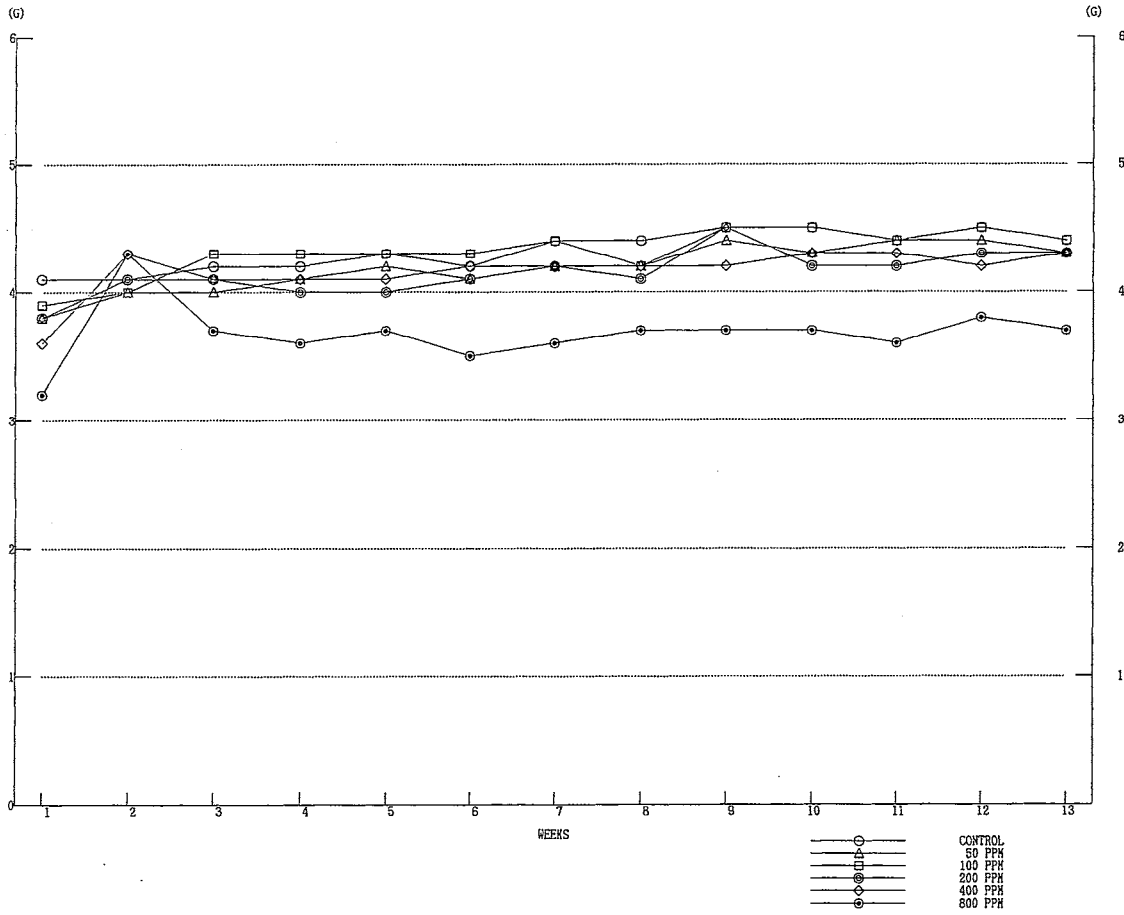


FIGURE 8 FOOD CONSUMPTION:MOUSE:MALE (THIRTEEN-WEEK STUDY)

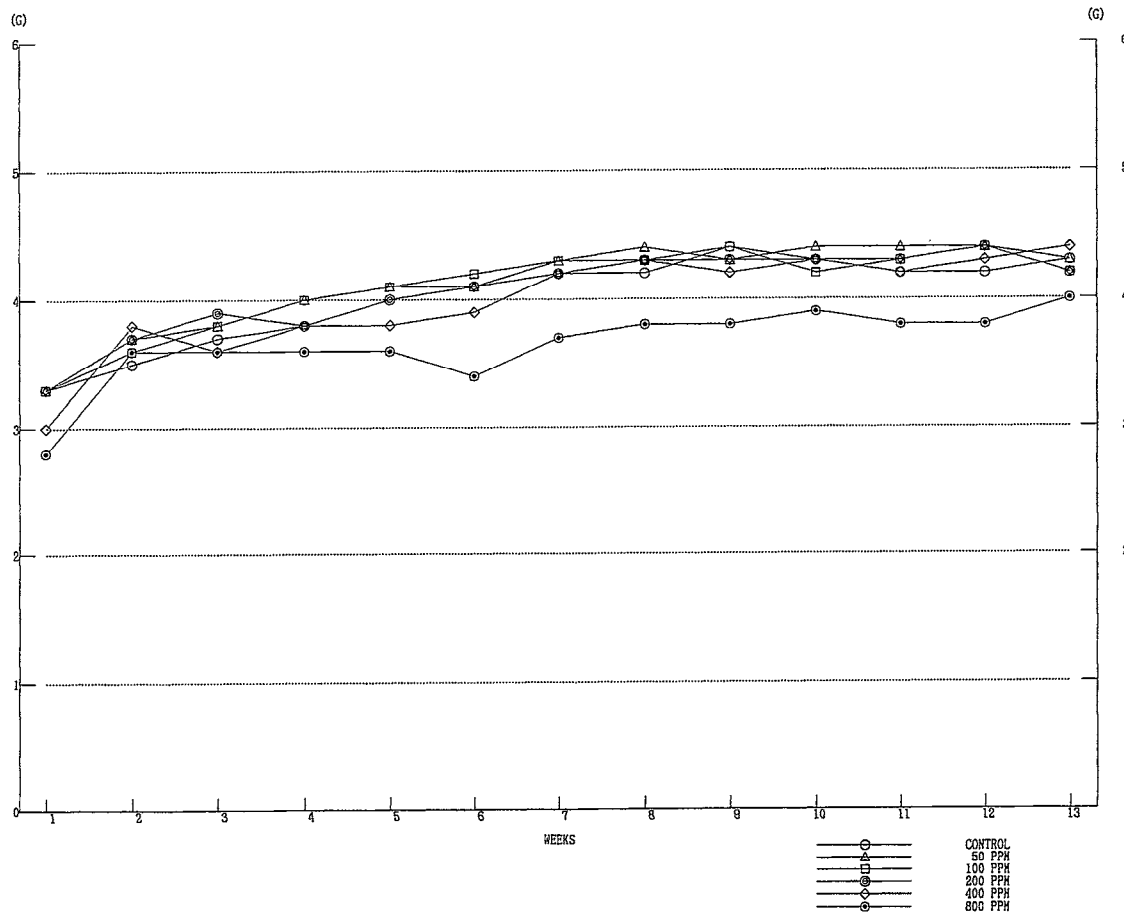


FIGURE 9 FOOD CONSUMPTION:MOUSE:FEMALE (THIRTEEN-WEEK STUDY)