

塩化メチルのラット及びマウスを用いた  
吸入によるがん原性試験報告書

試験番号：ラット/0210；マウス/0211

## FIGURES

F I G U R E S

FIGURE 1 METHYL CHLORIDE GAS GENERATION SYSTEM AND INHALATION SYSTEM

FIGURE 2 SURVIVAL ANIMAL RATE:RAT:MALE(TWO-YEAR STUDY)

FIGURE 3 SURVIVAL ANIMAL RATE:RAT:FEMALE(TWO-YEAR STUDY)

FIGURE 4 BODY WEIGHT CHANGES:RAT:MALE(TWO-YEAR STUDY)

FIGURE 5 BODY WEIGHT CHANGES:RAT:FEMALE(TWO-YEAR STUDY)

FIGURE 6 FOOD CONSUMPTION:RAT:MALE(TWO-YEAR STUDY)

FIGURE 7 FOOD CONSUMPTION:RAT:FEMALE(TWO-YEAR STUDY)

FIGURE 8 SURVIVAL ANIMAL RATE:MOUSE:MALE(TWO-YEAR STUDY)

FIGURE 9 SURVIVAL ANIMAL RATE:MOUSE:FEMALE(TWO-YEAR STUDY)

FIGURE 10 BODY WEIGHT CHANGES:MOUSE:MALE(TWO-YEAR STUDY)

FIGURE 11 BODY WEIGHT CHANGES:MOUSE:FEMALE(TWO-YEAR STUDY)

FIGURE 12 FOOD CONSUMPTION:MOUSE:MALE(TWO-YEAR STUDY)

FIGURE 13 FOOD CONSUMPTION:MOUSE:FEMALE(TWO-YEAR STUDY)

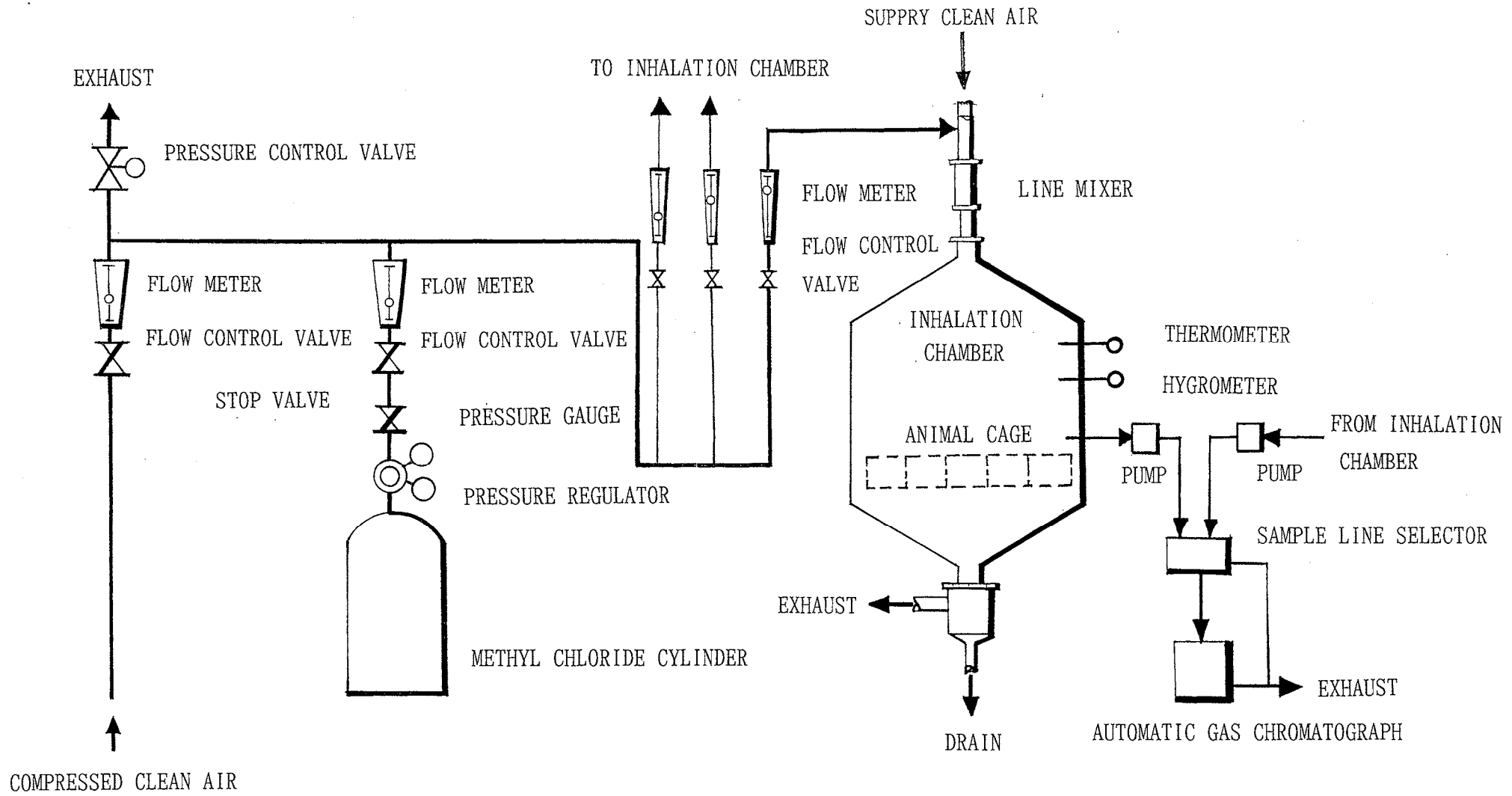


FIGURE 1 METHYL CHLORIDE GAS GENERATION SYSTEM AND INHALATION SYSTEM

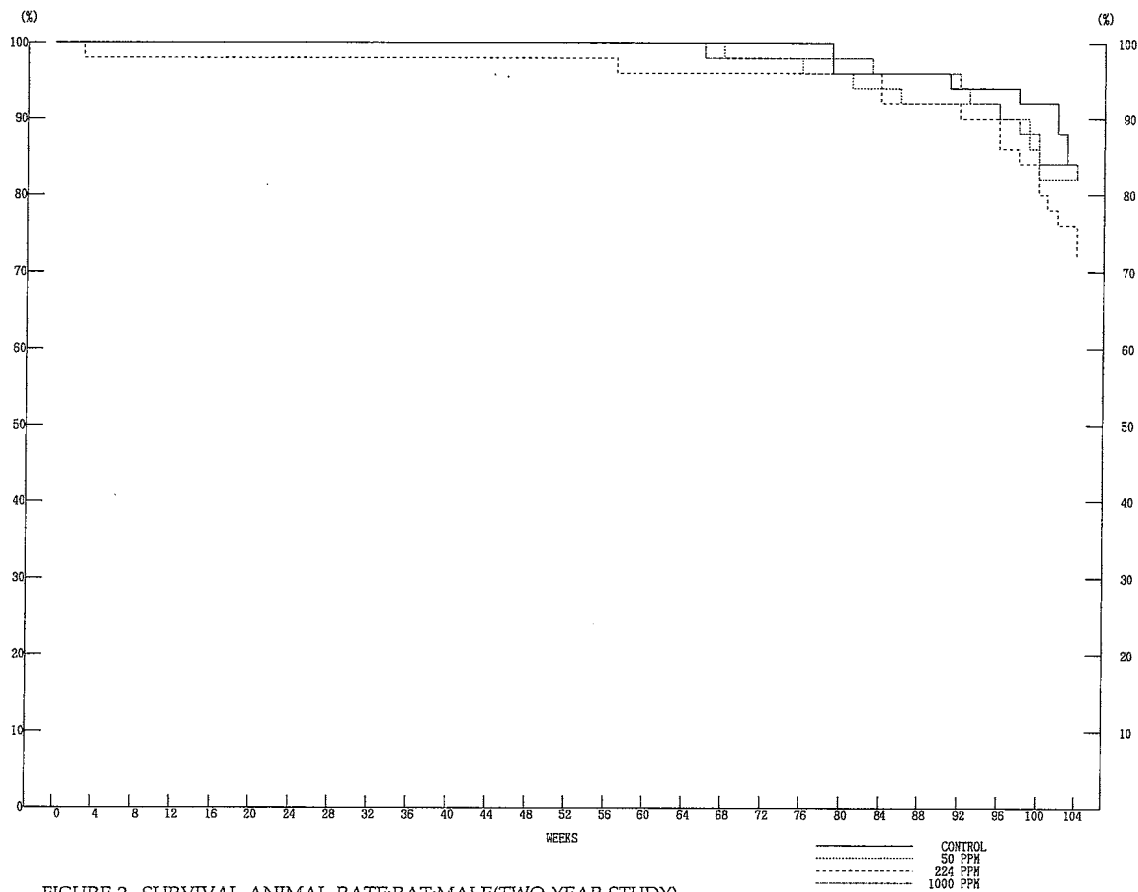


FIGURE 2 SURVIVAL ANIMAL RATE:RAT:MALE(TWO-YEAR STUDY)

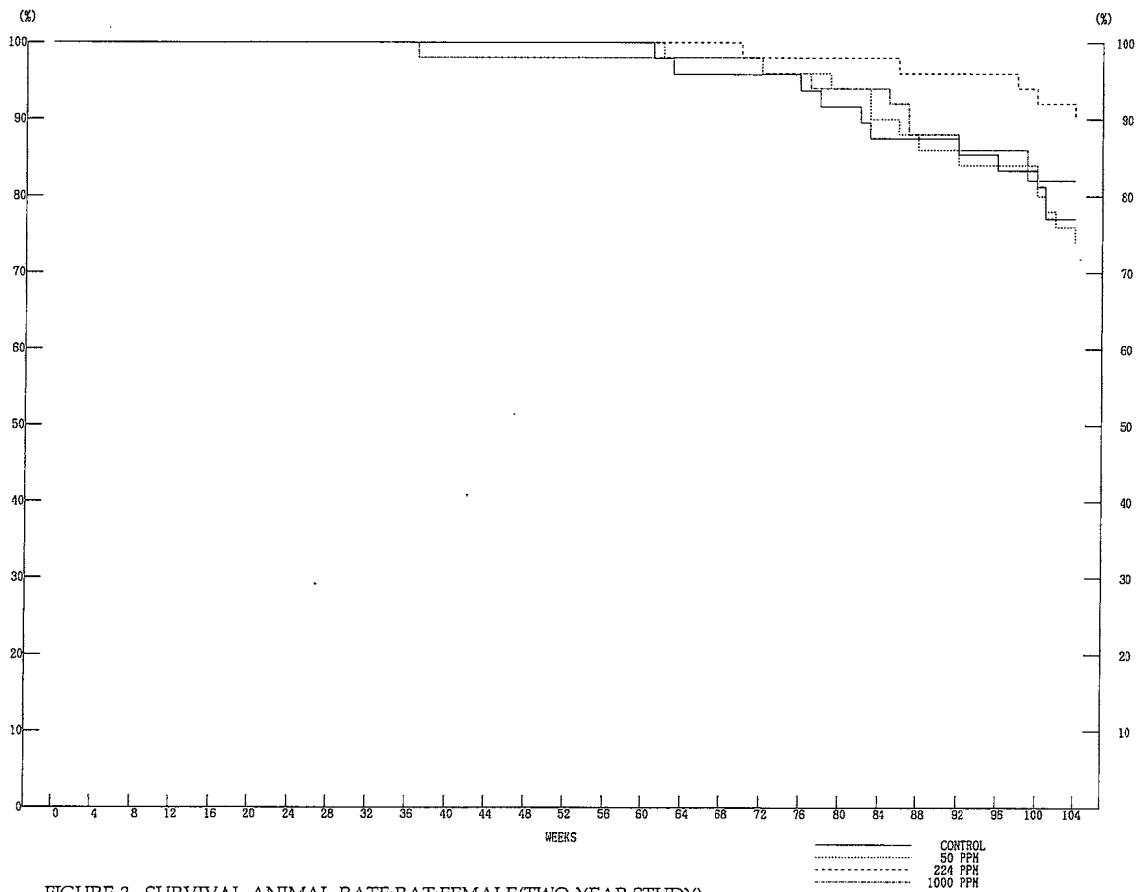
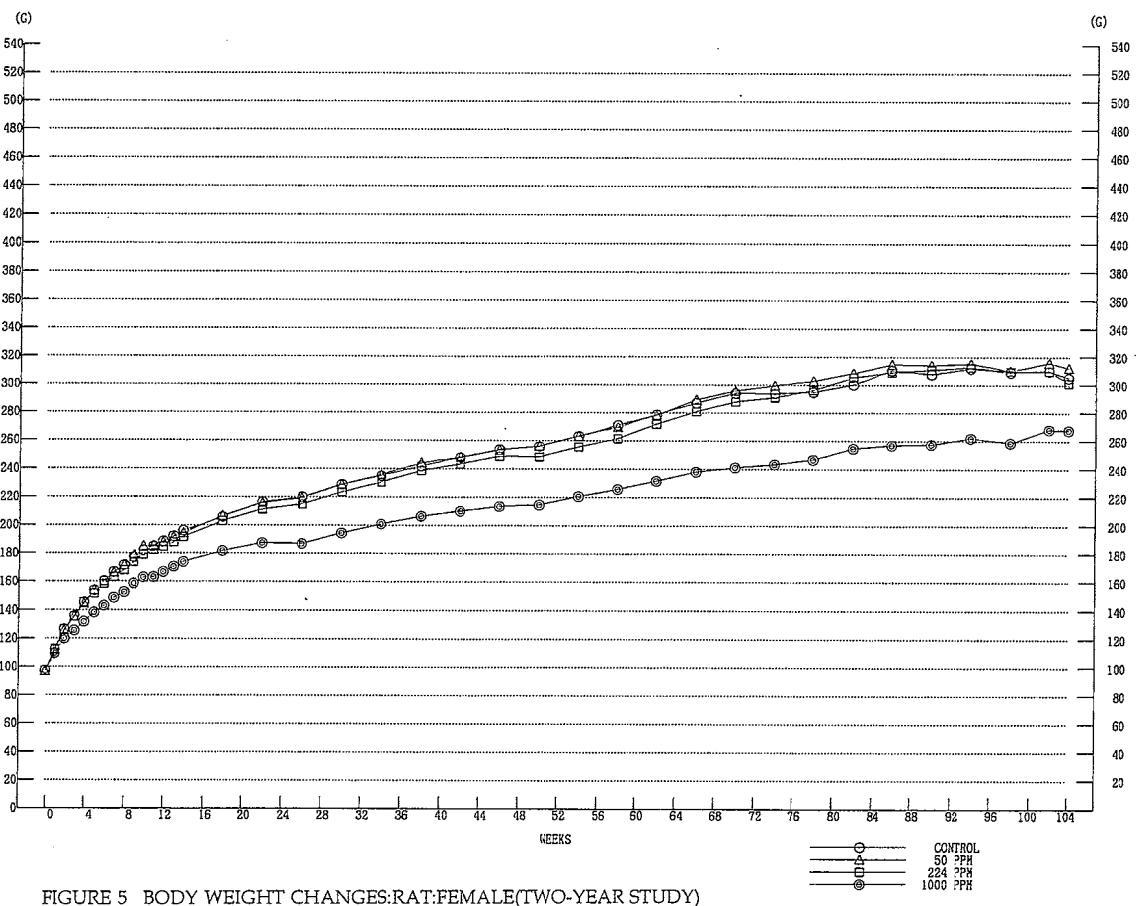
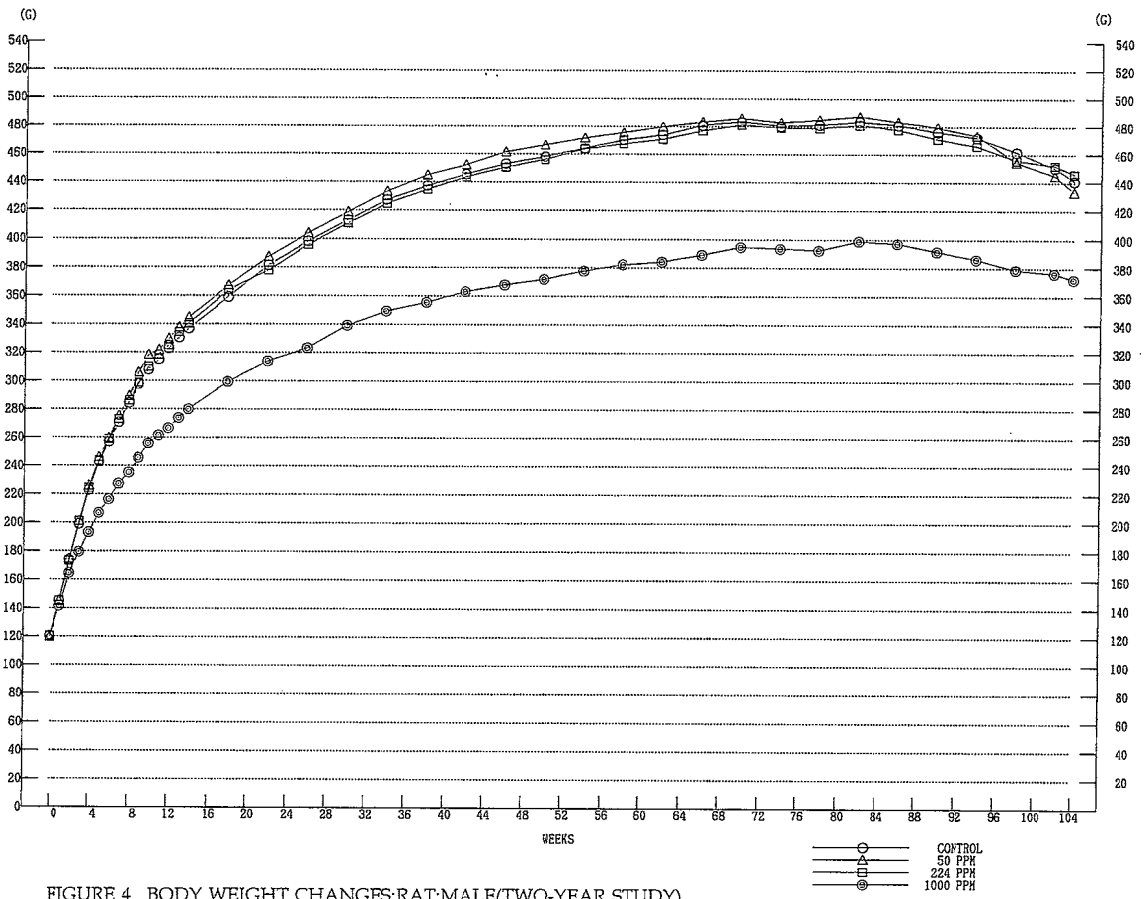


FIGURE 3 SURVIVAL ANIMAL RATE:RAT:FEMALE(TWO-YEAR STUDY)



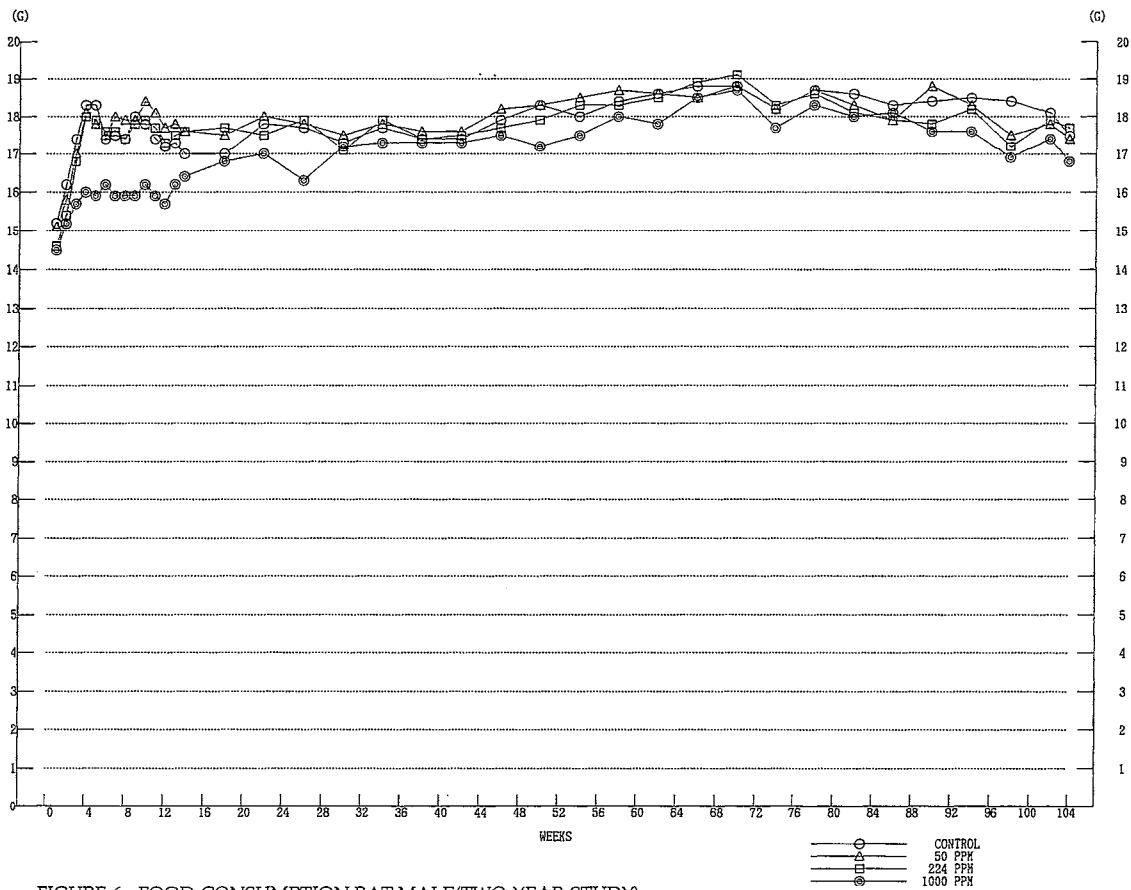


FIGURE 6 FOOD CONSUMPTION:RAT:MALE(TWO-YEAR STUDY)

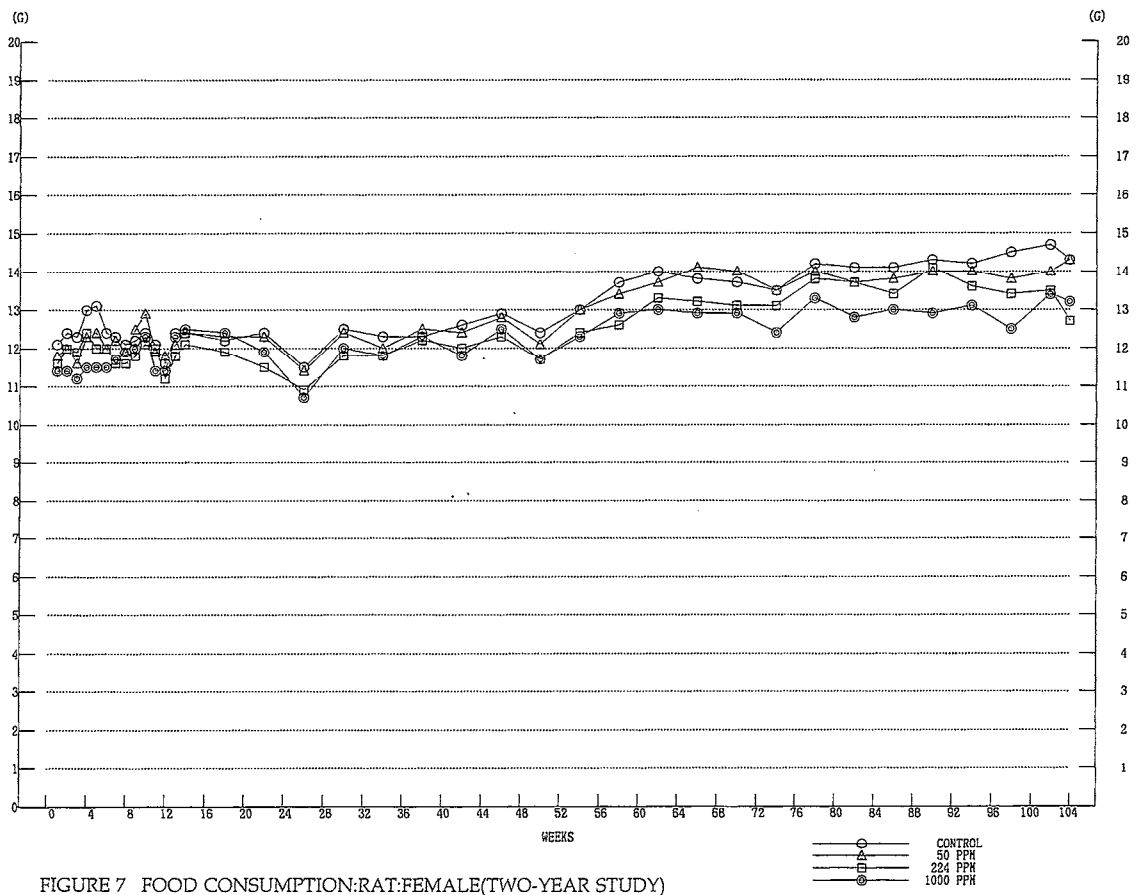


FIGURE 7 FOOD CONSUMPTION:RAT:FEMALE(TWO-YEAR STUDY)

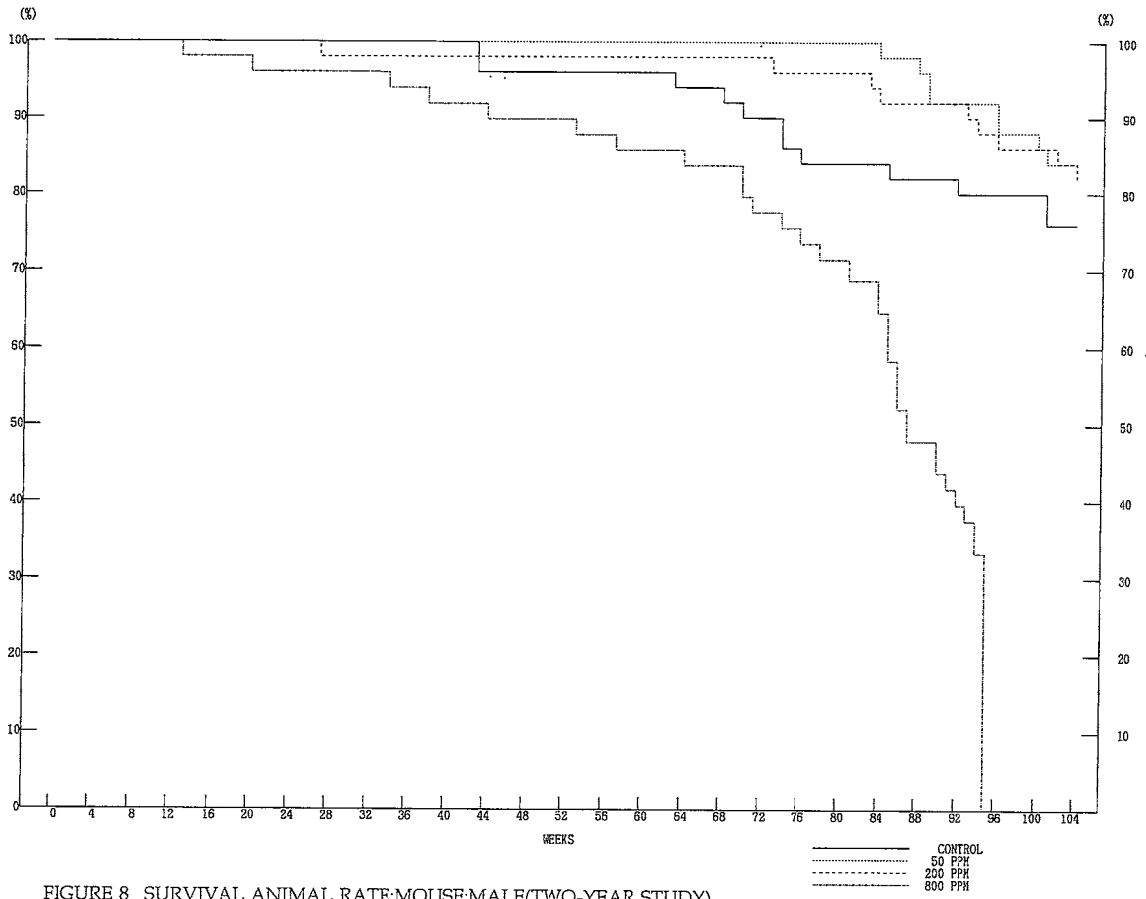


FIGURE 8 SURVIVAL ANIMAL RATE:MOUSE:MALE(TWO-YEAR STUDY)

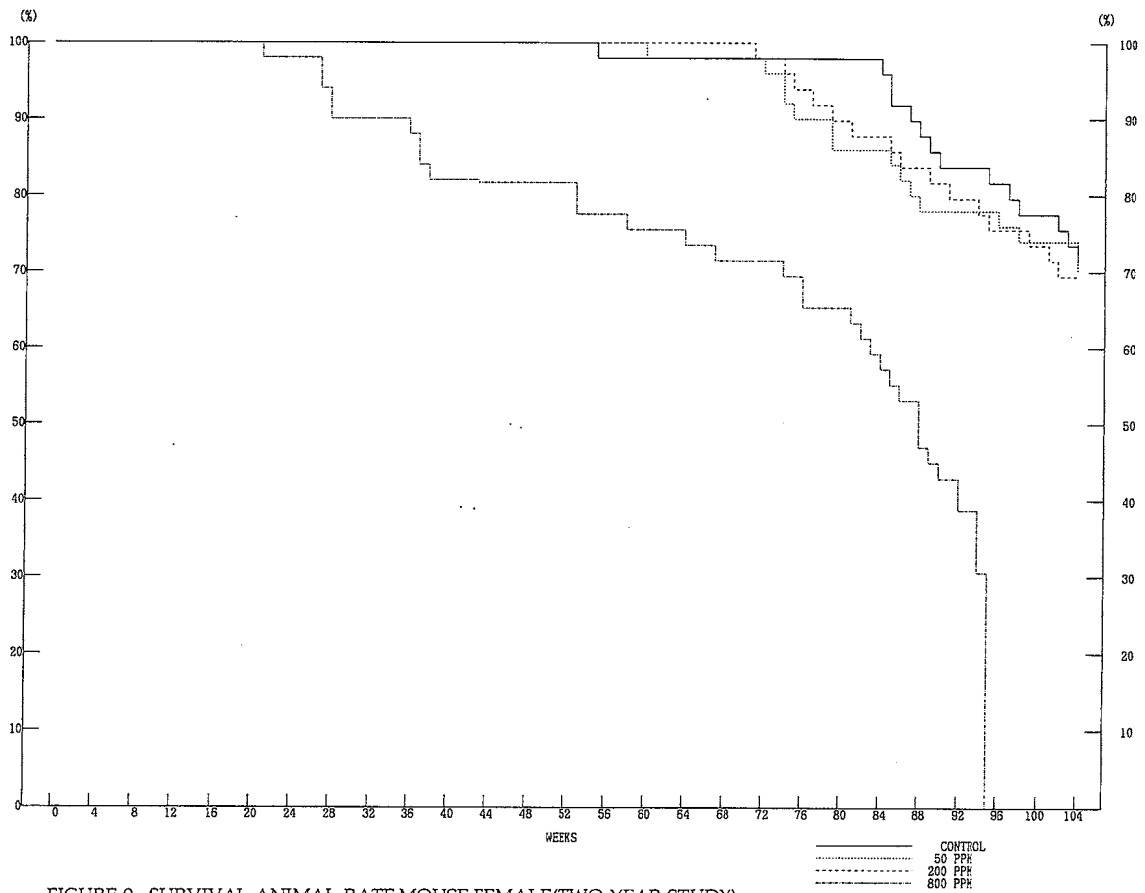
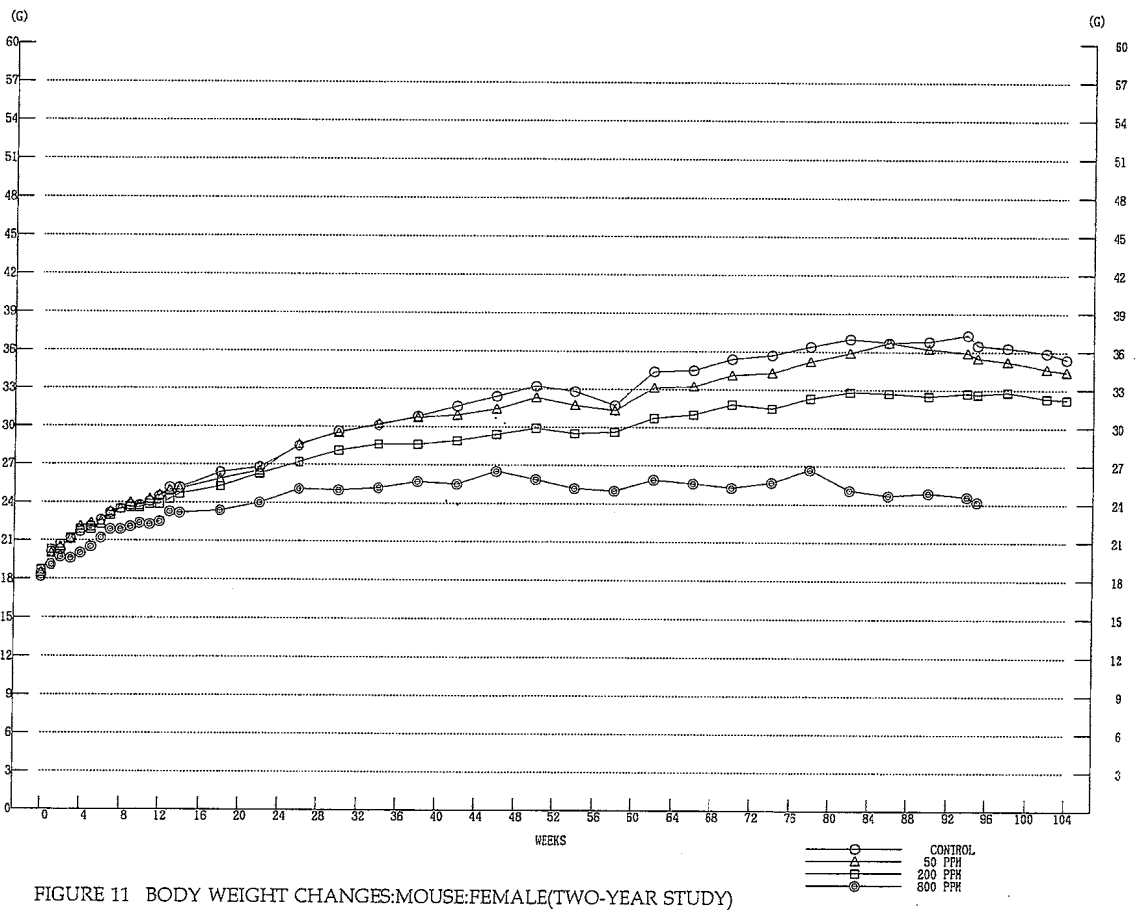
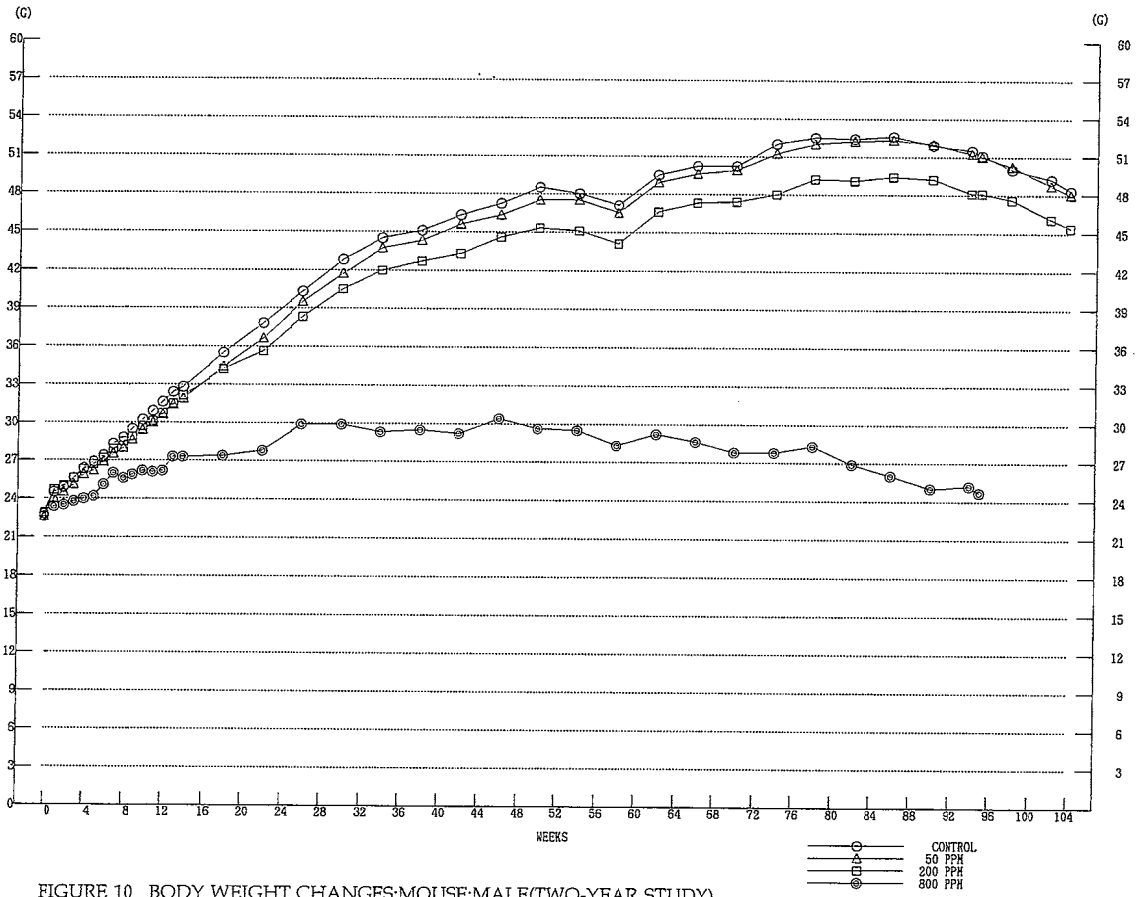


FIGURE 9 SURVIVAL ANIMAL RATE:MOUSE:FEMALE(TWO-YEAR STUDY)





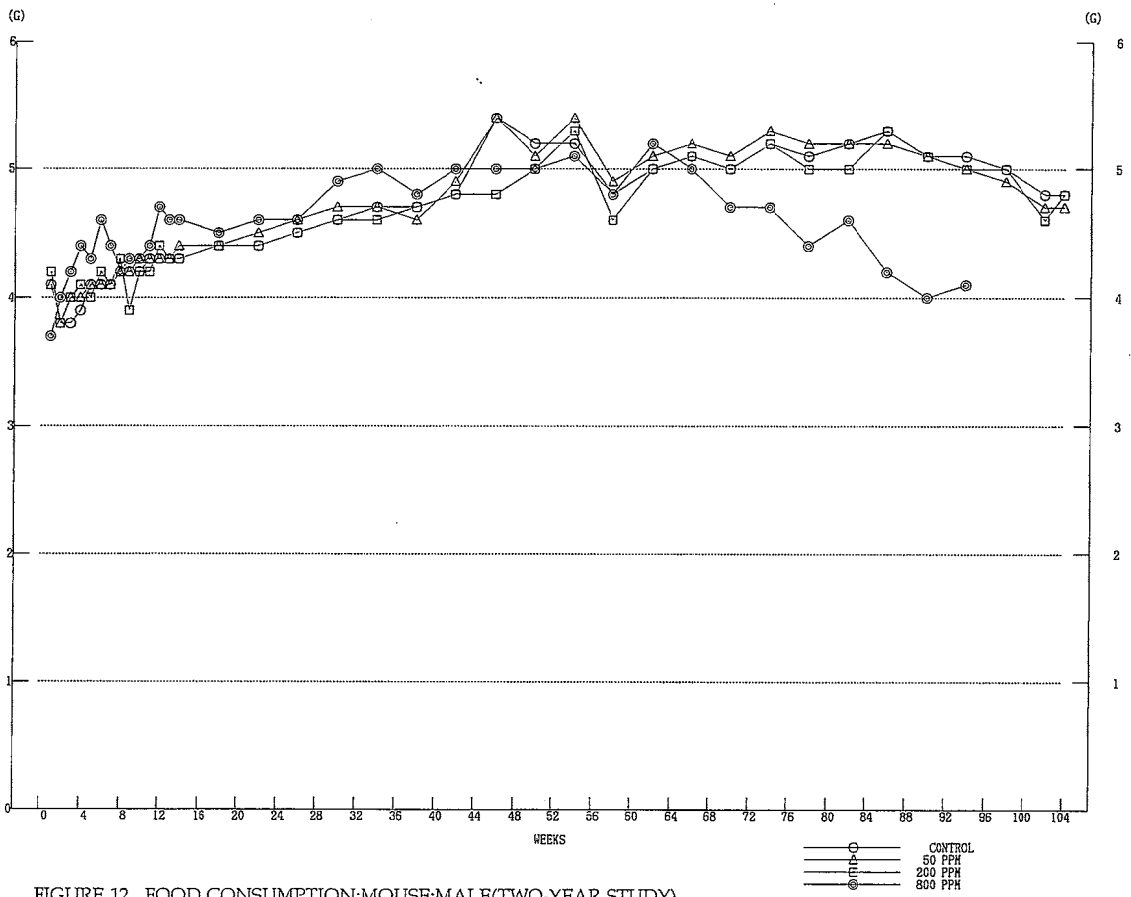


FIGURE 12 FOOD CONSUMPTION:MOUSE:MALE(TWO-YEAR STUDY)

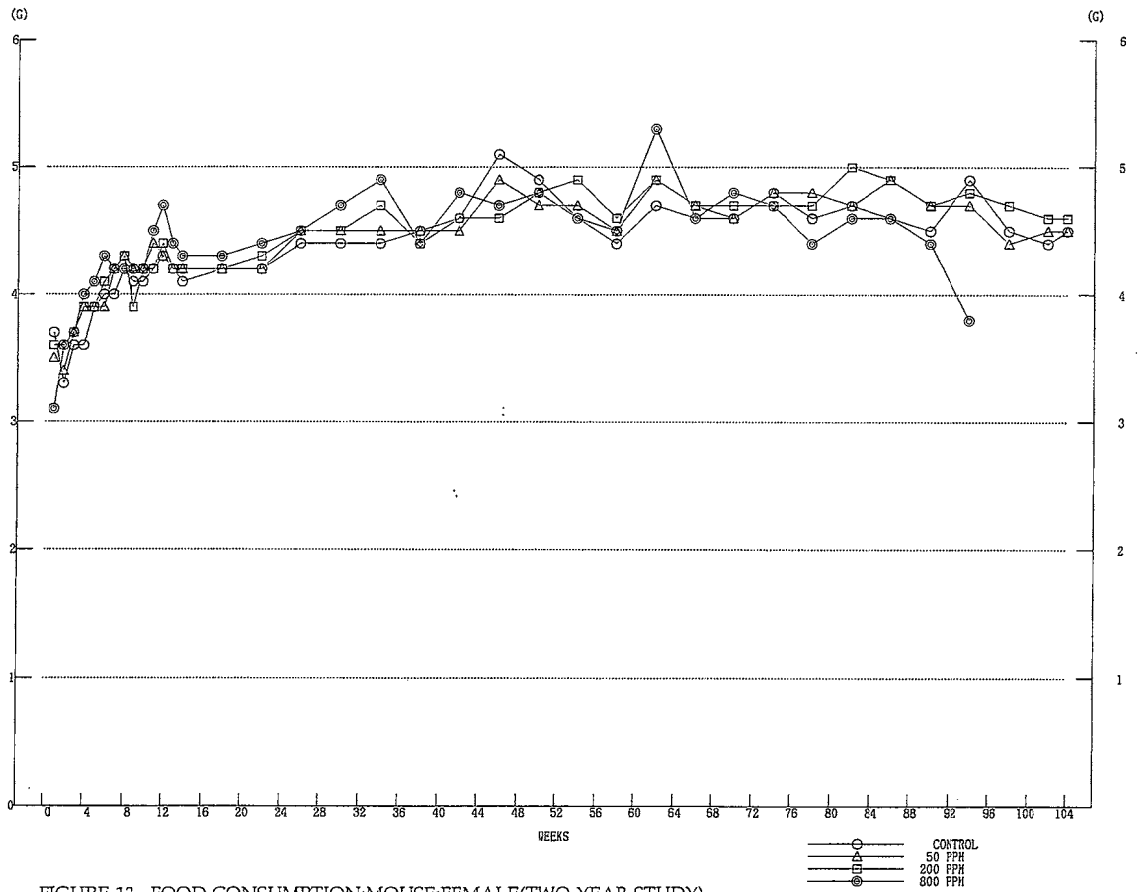


FIGURE 13 FOOD CONSUMPTION:MOUSE:FEMALE(TWO-YEAR STUDY)