

ビフェニルのラット及びマウスを用いた
経口投与によるがん原性試験(混餌試験)報告書

試験番号：ラット/0205；マウス/0206

FIGURES

FIGURES

- FIGURE 1 SURVIVAL ANIMAL RATE : RAT : MALE (TWO-YEAR STUDY)
- FIGURE 2 SURVIVAL ANIMAL RATE : RAT : FEMALE (TWO-YEAR STUDY)
- FIGURE 3 BODY WEIGHT CHANGES : RAT : MALE (TWO-YEAR STUDY)
- FIGURE 4 BODY WEIGHT CHANGES : RAT : FEMALE (TWO-YEAR STUDY)
- FIGURE 5 FOOD CONSUMPTION : RAT : MALE (TWO-YEAR STUDY)
- FIGURE 6 FOOD CONSUMPTION : RAT : FEMALE (TWO-YEAR STUDY)
- FIGURE 7 SURVIVAL ANIMAL RATE : MOUSE : MALE (TWO-YEAR STUDY)
- FIGURE 8 SURVIVAL ANIMAL RATE : MOUSE : FEMALE (TWO-YEAR STUDY)
- FIGURE 9 BODY WEIGHT CHANGES : MOUSE : MALE (TWO-YEAR STUDY)
- FIGURE 10 BODY WEIGHT CHANGES : MOUSE : FEMALE (TWO-YEAR STUDY)
- FIGURE 11 FOOD CONSUMPTION : MOUSE : MALE (TWO-YEAR STUDY)
- FIGURE 12 FOOD CONSUMPTION : MOUSE : FEMALE (TWO-YEAR STUDY)
- FIGURE 13 ラット雄における尿路系病変の発生過程

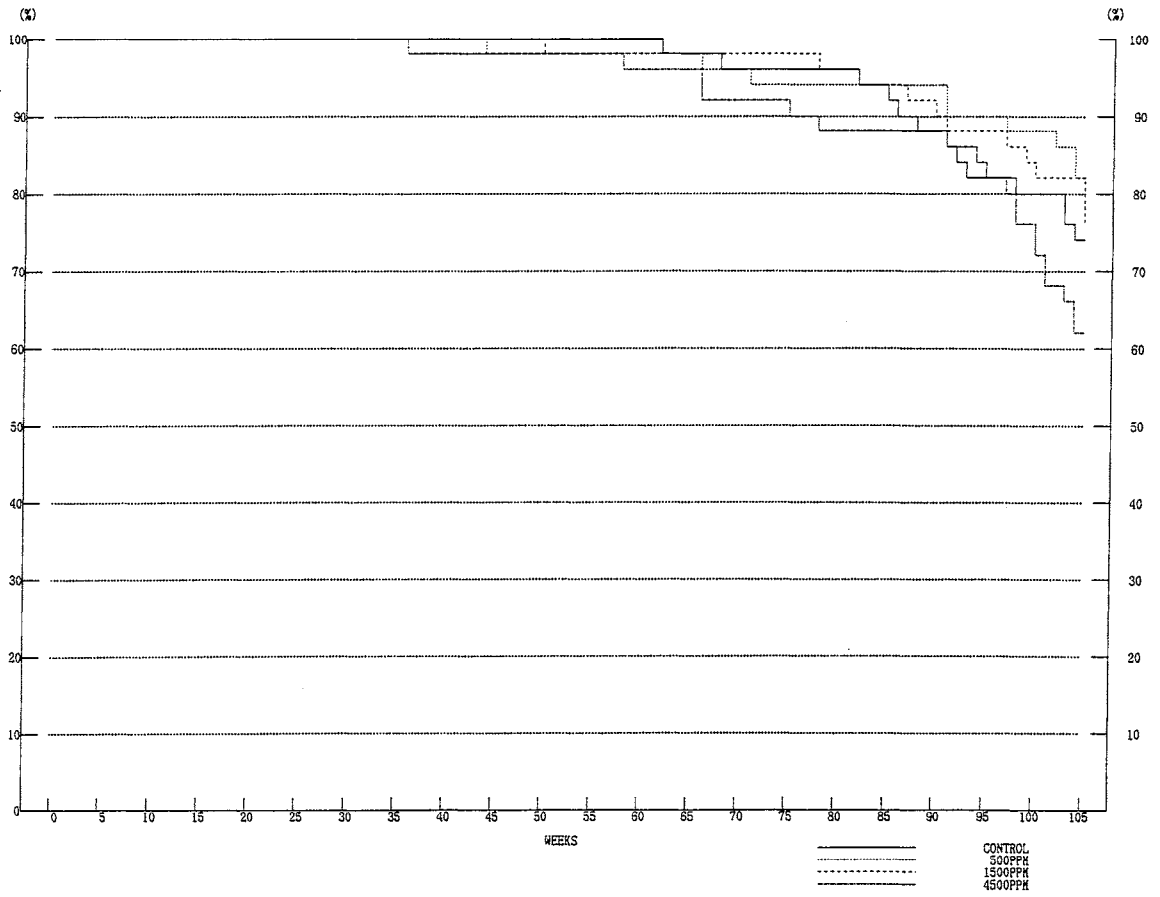


FIGURE 1 SURVIVAL ANIMAL RATE : RAT : MALE (TWO-YEAR STUDY)

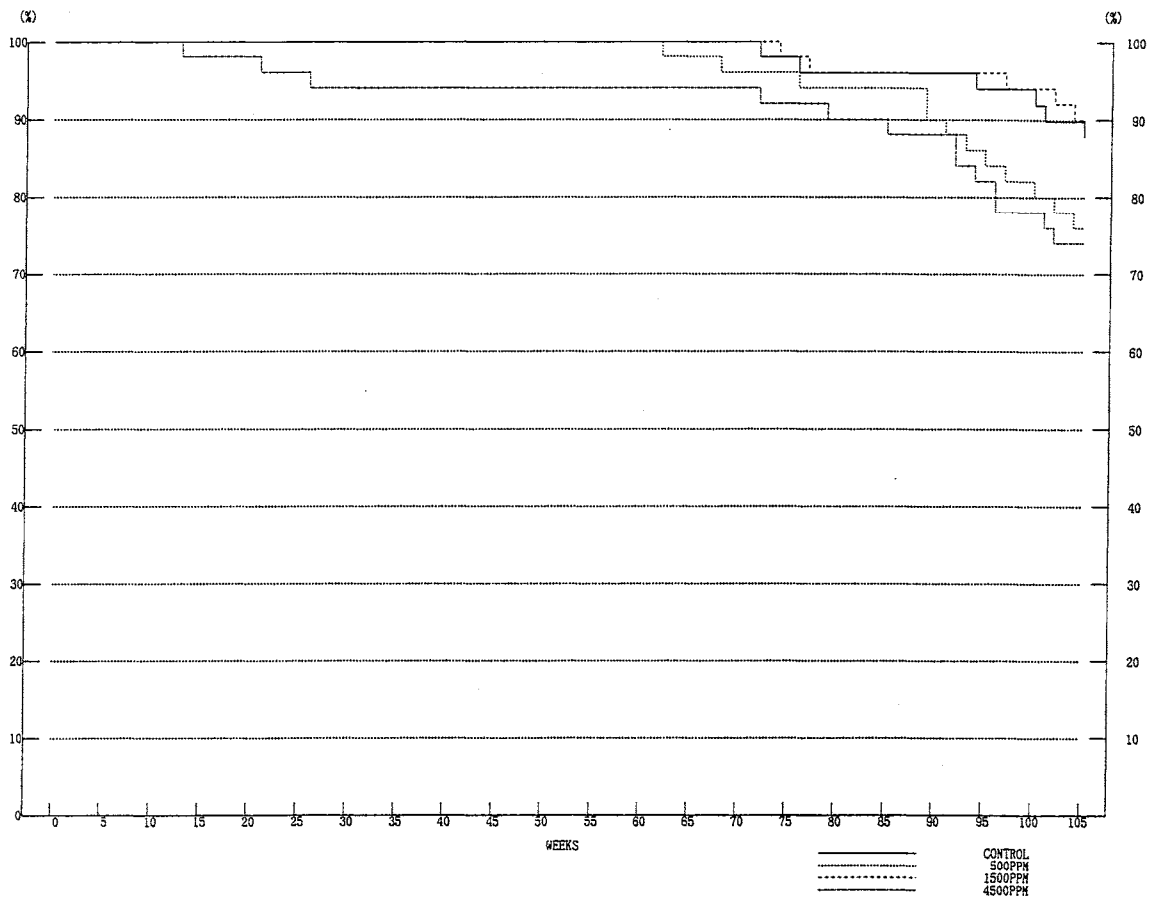


FIGURE 2 SURVIVAL ANIMAL RATE : RAT : FEMALE (TWO-YEAR STUDY)

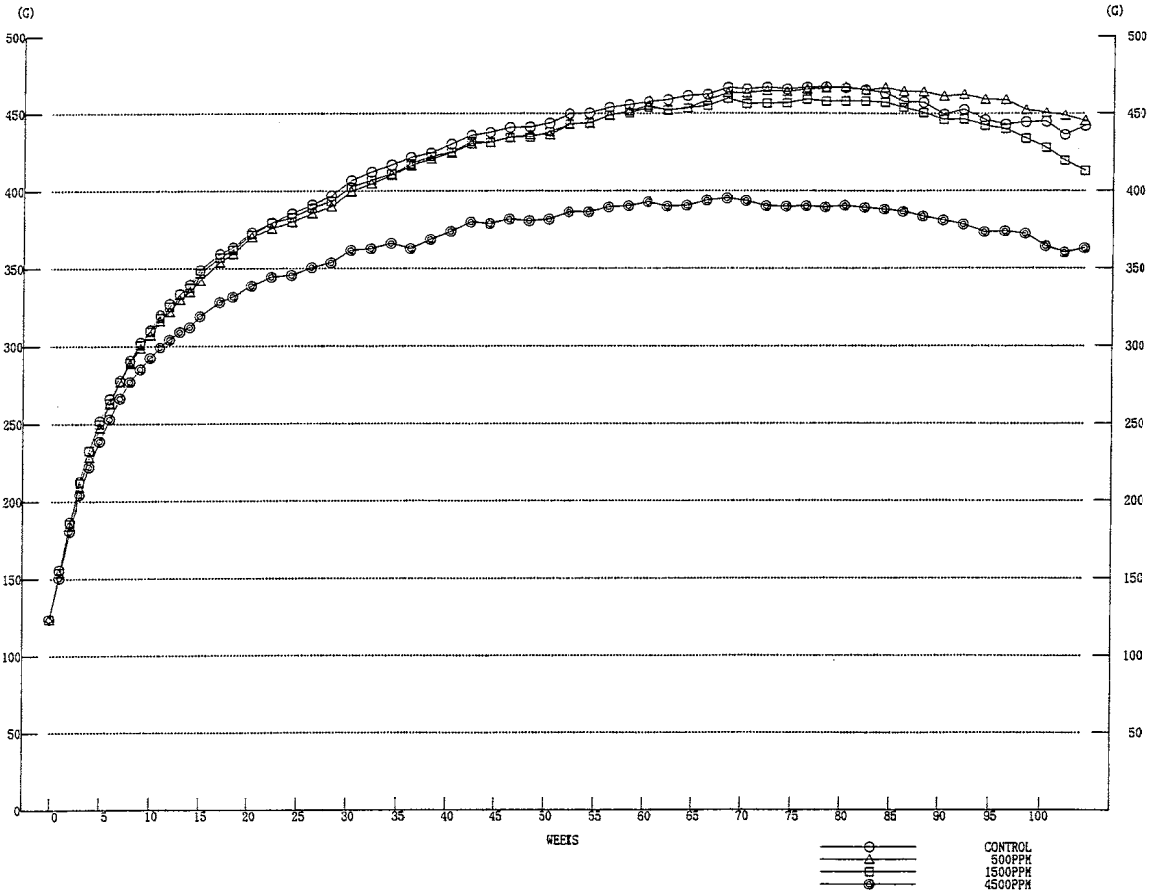


FIGURE 3 BODY WEIGHT CHANGES : RAT : MALE (TWO-YEAR STUDY)

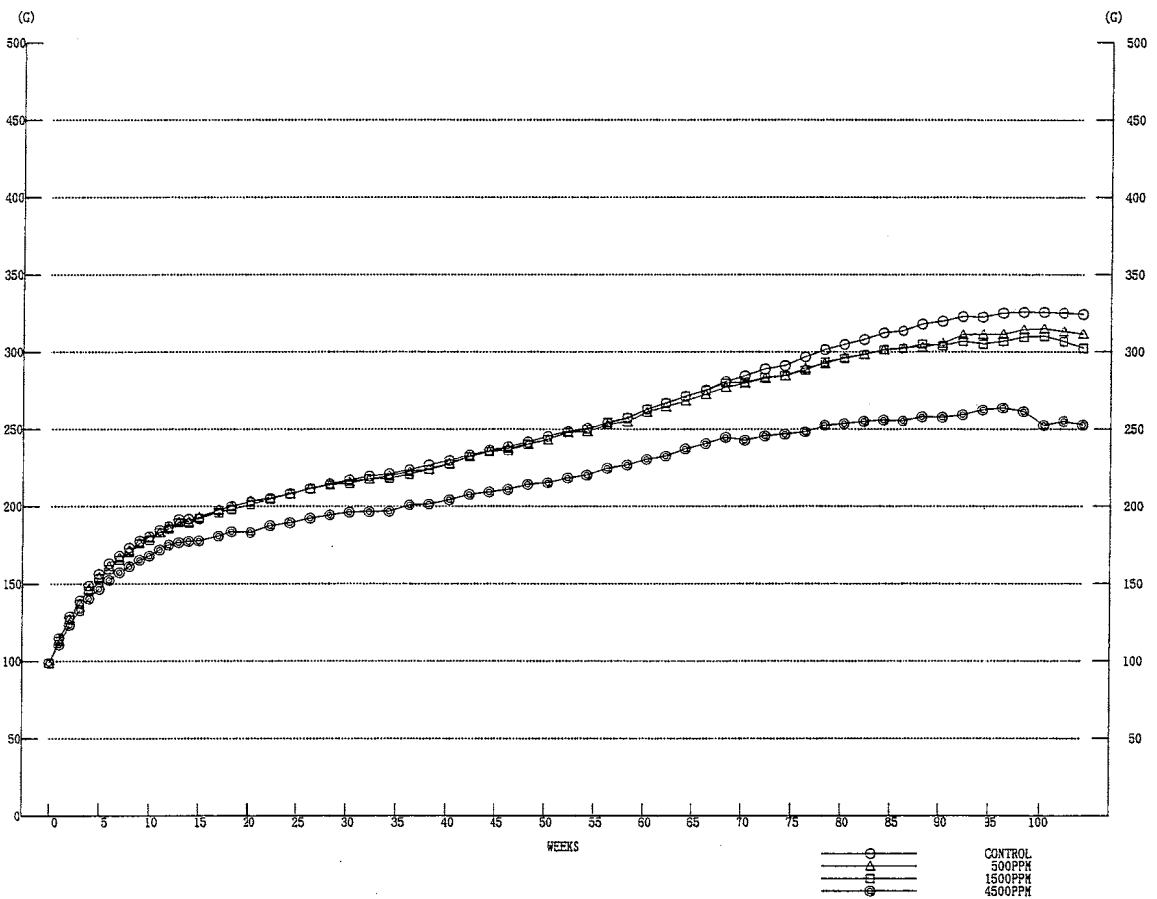


FIGURE 4 BODY WEIGHT CHANGES : RAT : FEMALE (TWO-YEAR STUDY)

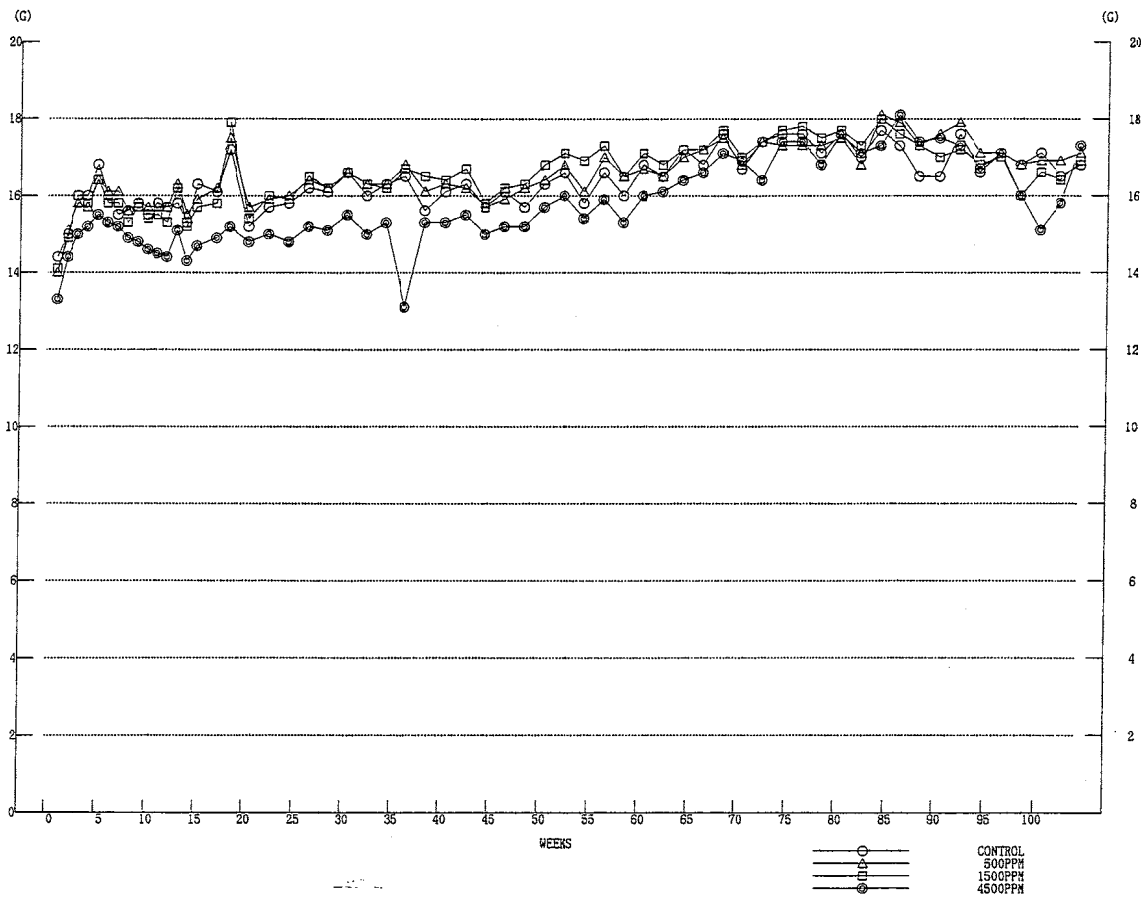


FIGURE 5 FOOD CONSUMPTION : RAT : MALE (TWO-YEAR STUDY)

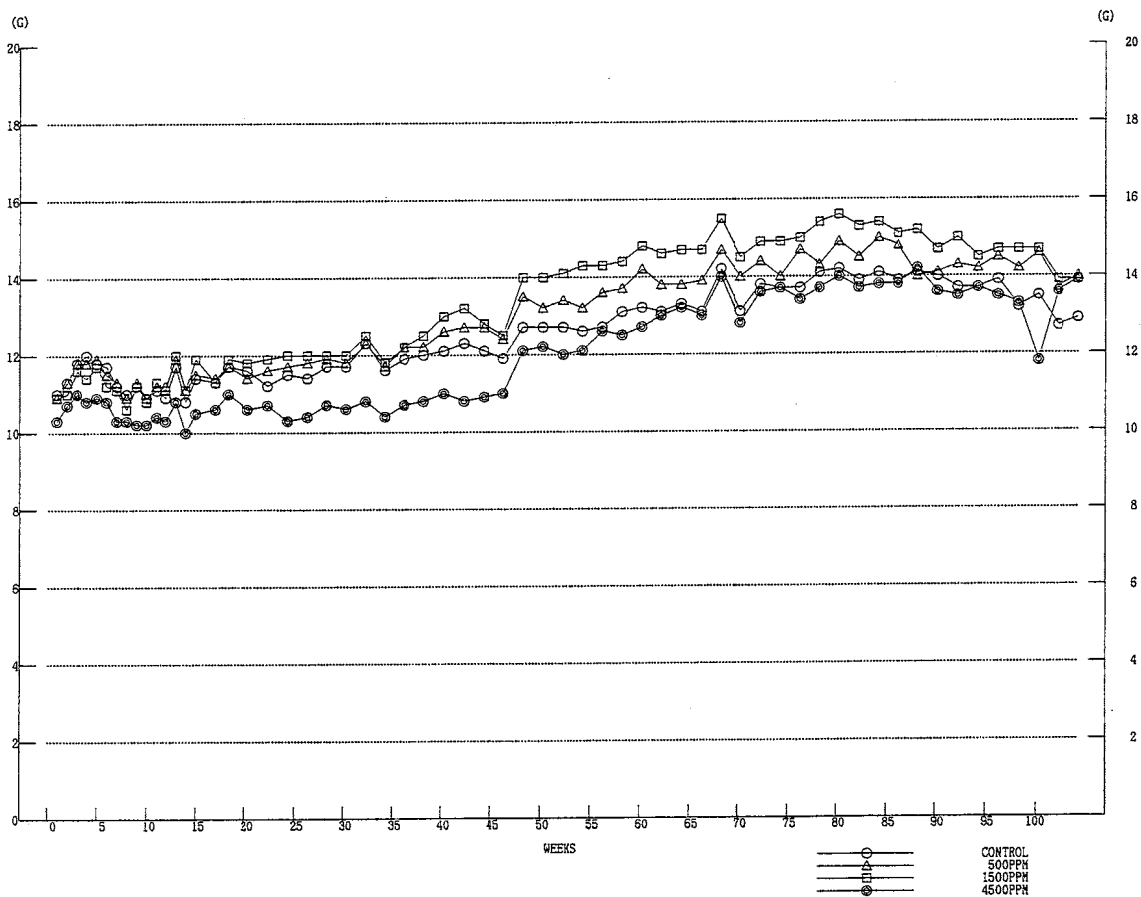


FIGURE 6 FOOD CONSUMPTION : RAT FEMALE (TWO-YEAR STUDY)

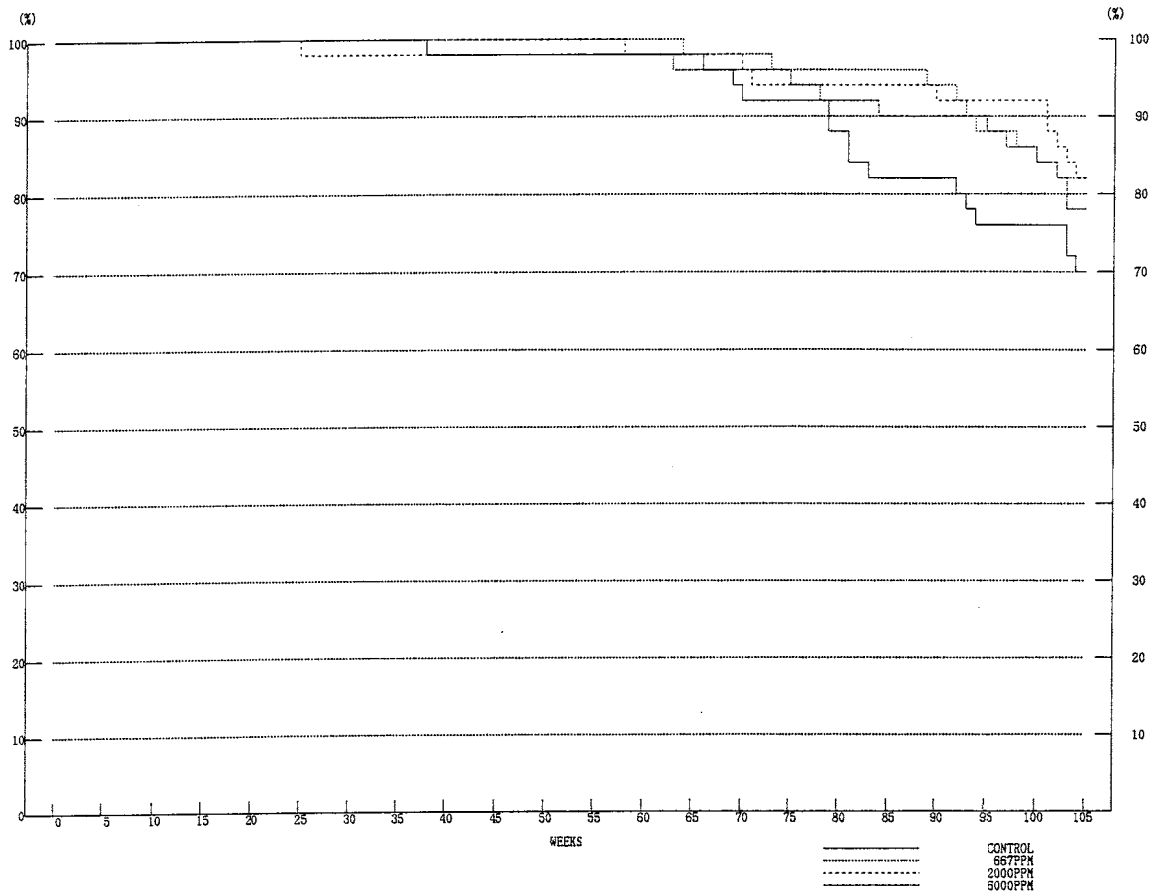


FIGURE 7 SURVIVAL ANIMAL RATE : MOUSE : MALE (TWO-YEAR STUDY)

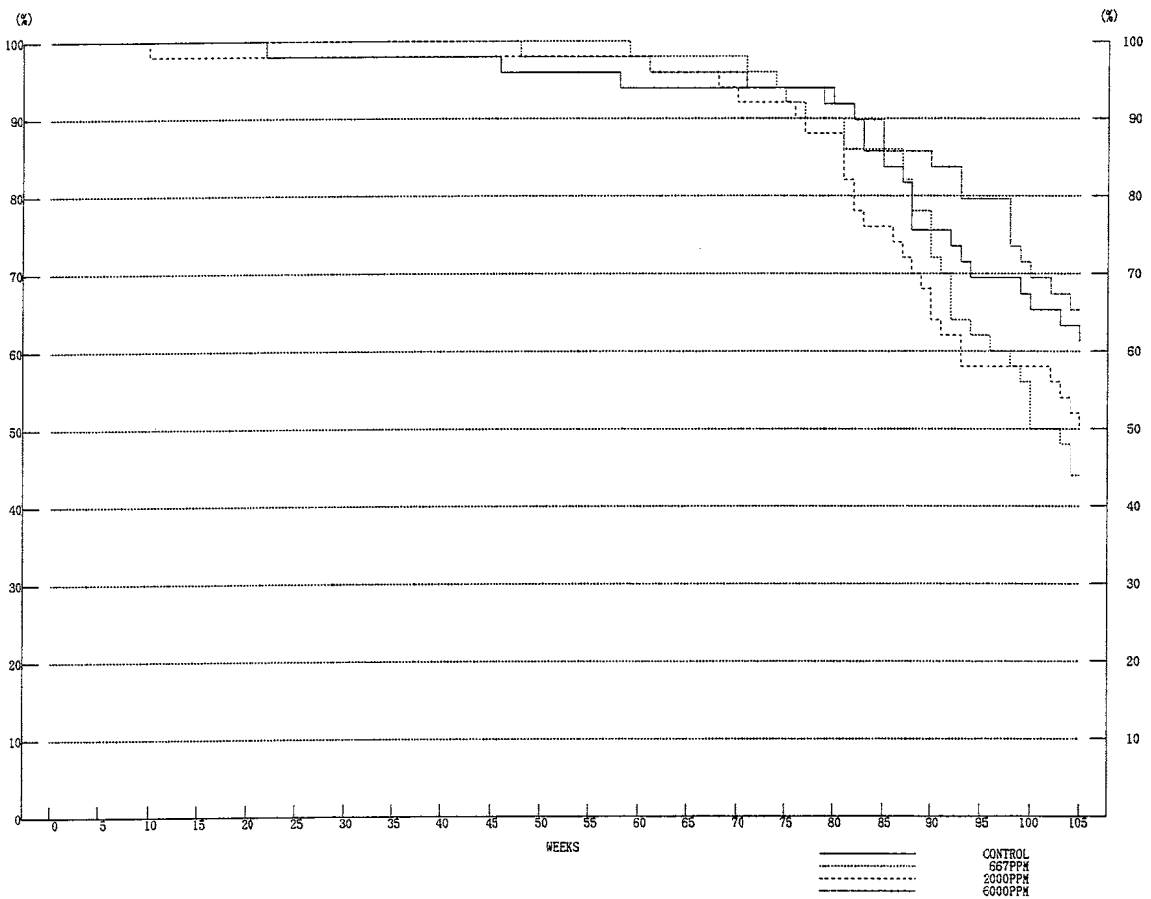


FIGURE 8 SURVIVAL ANIMAL RATE : MOUSE : FEMALE (TWO-YEAR STUDY)

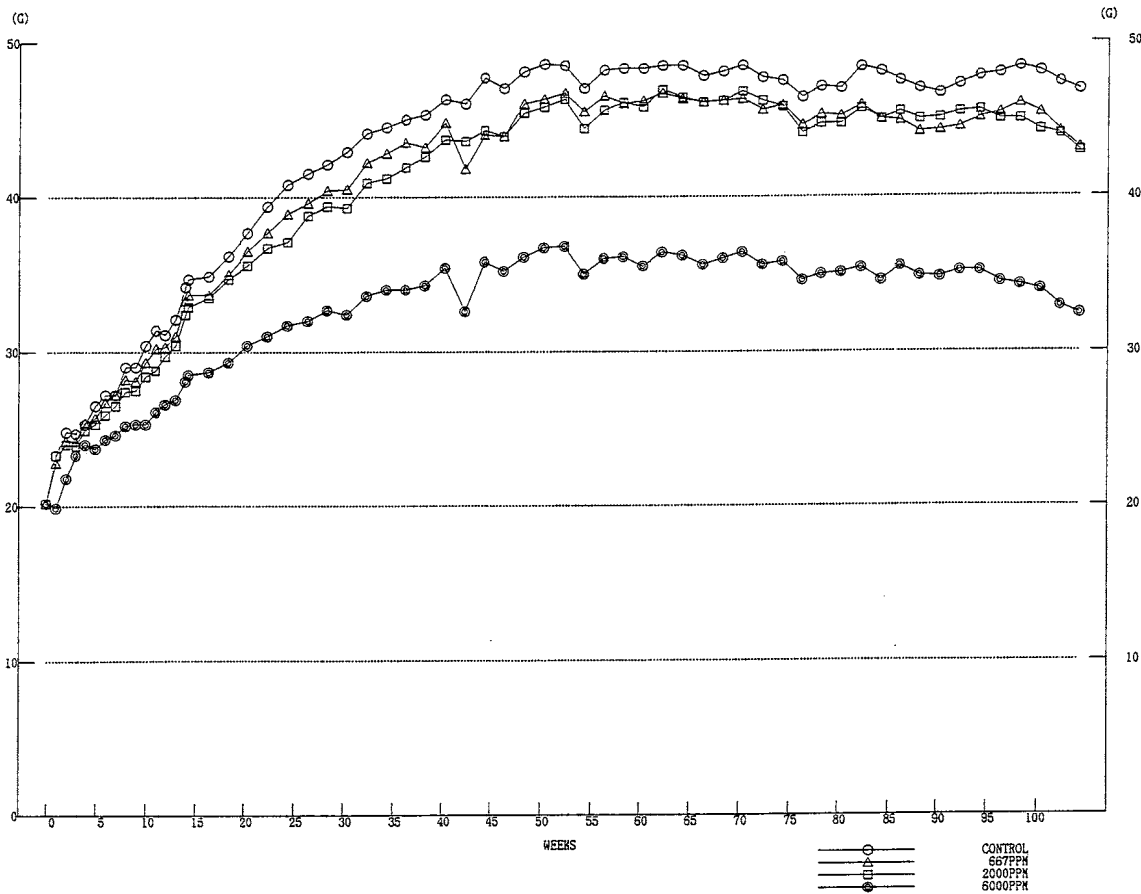


FIGURE 9 BODY WEIGHT CHANGES : MOUSE : MALE (TWO-YEAR STUDY)

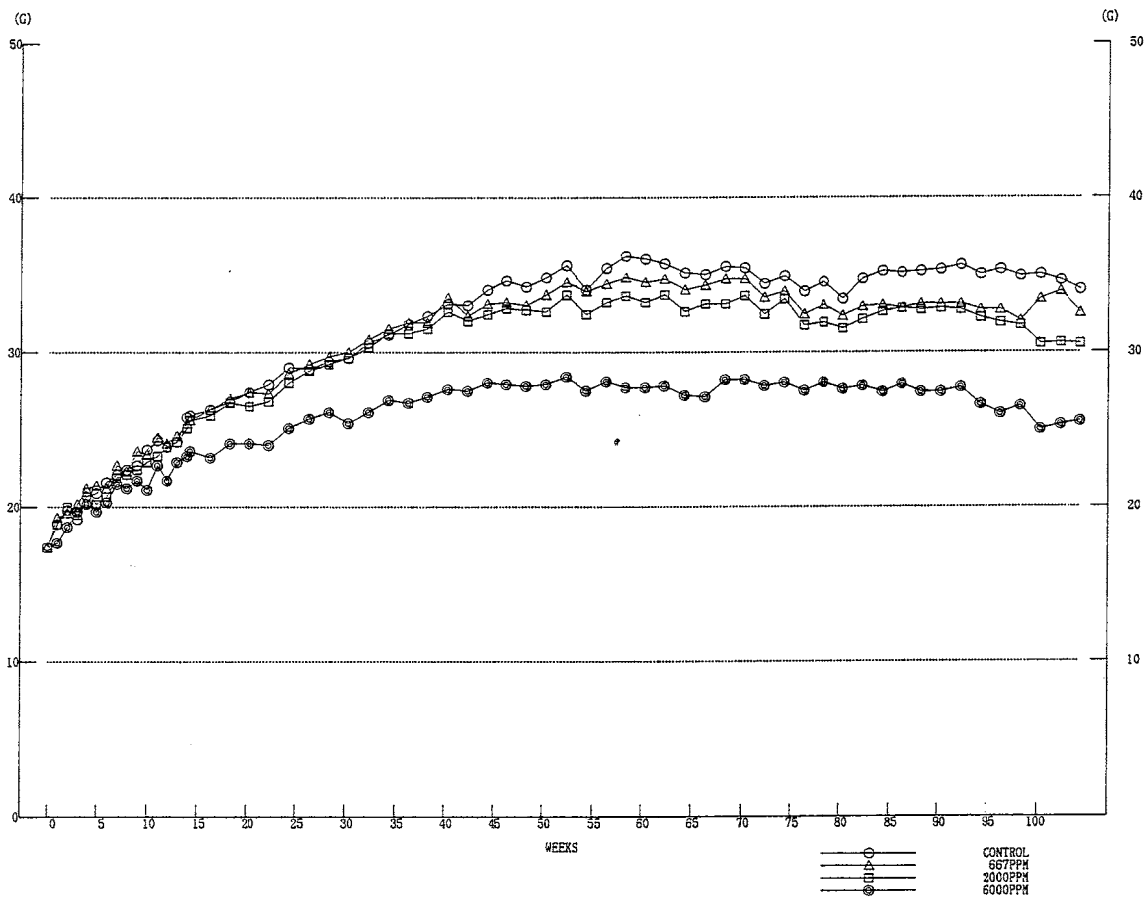


FIGURE 10 BODY WEIGHT CHANGES : MOUSE FEMALE (TWO-YEAR STUDY)

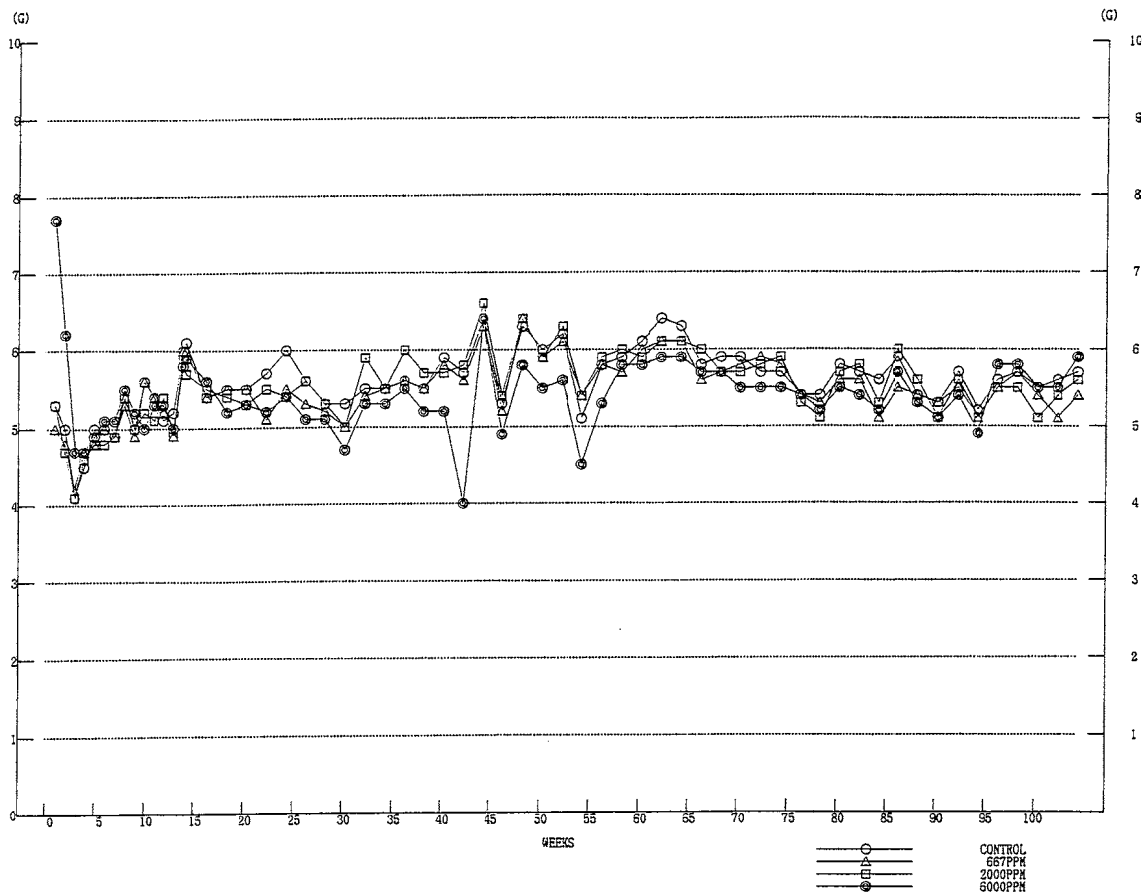


FIGURE 11 FOOD CONSUMPTION : MOUSE : MALE (TWO-YEAR STUDY)

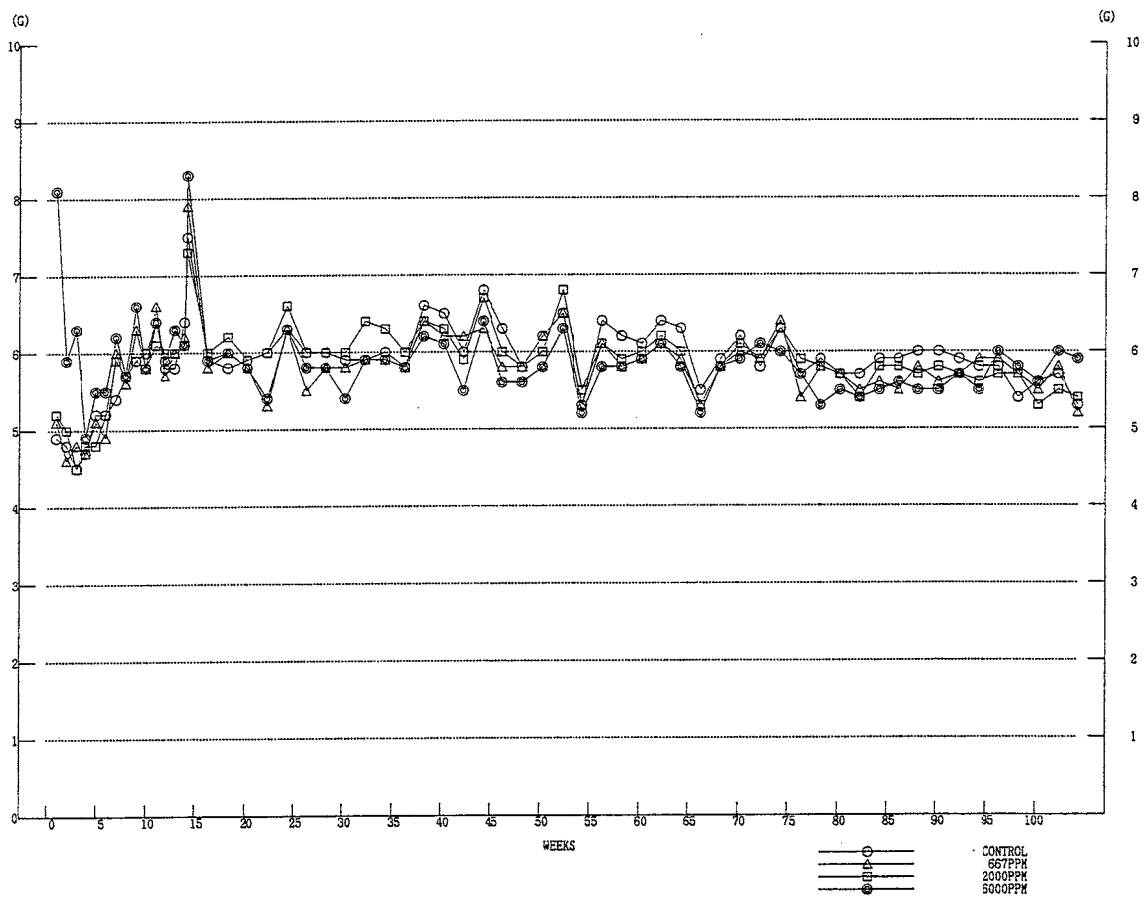


FIGURE 12 FOOD CONSUMPTION : MOUSE : FEMALE (TWO-YEAR STUDY)

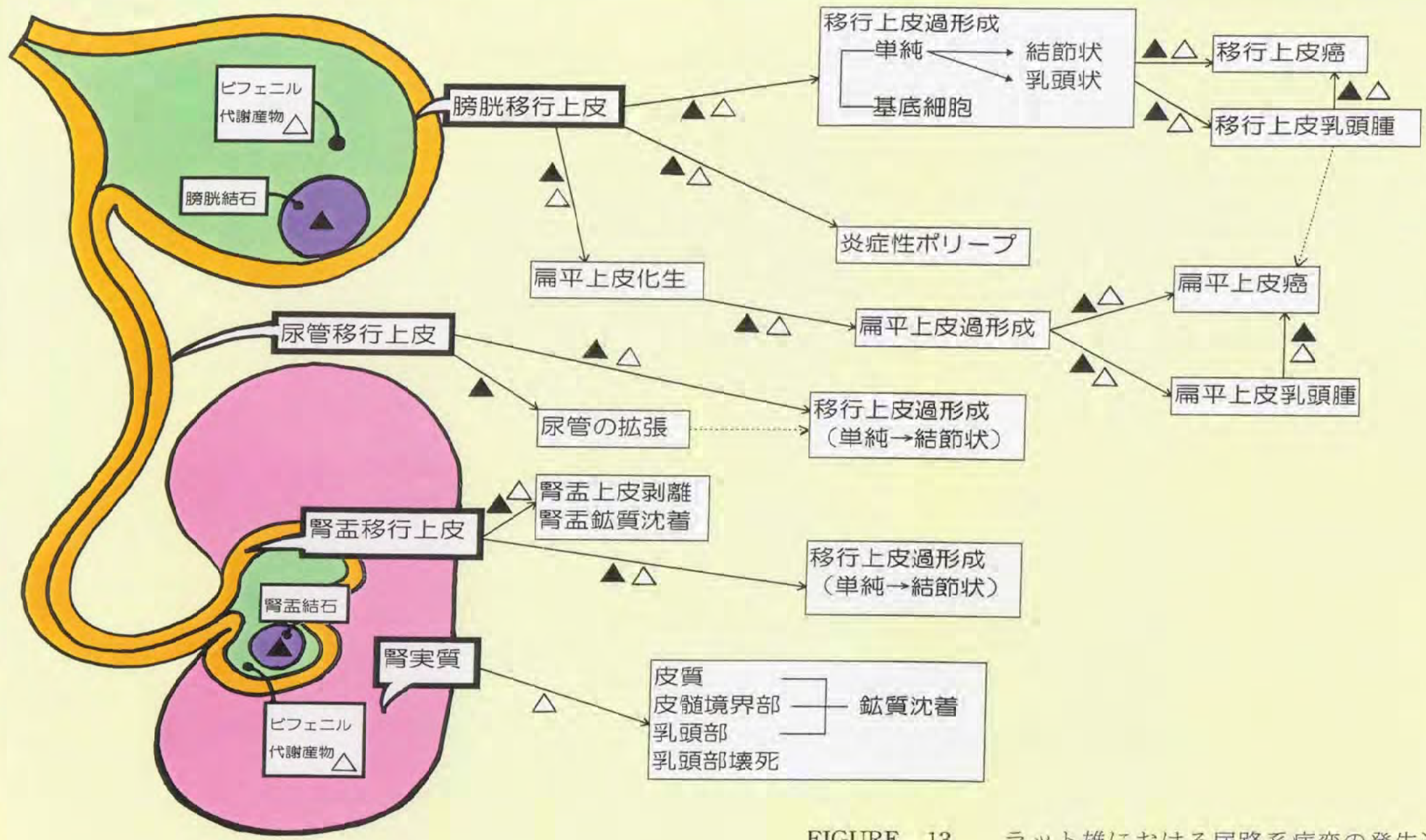


FIGURE 13 ラット雄における尿路系病変の発生過程