

アクリル酸メチルのマウスを用いた吸入による 2 週間毒性試験報告書

試験番号 : 0797

## APPENDICES

## APPENDICES

- APPENDIX 1-1 IDENTITY OF METHYL ACRYLATE IN THE 2-WEEK INHALATION STUDY
- APPENDIX 1-2 STABILITY OF METHYL ACRYLATE IN THE 2-WEEK INHALATION STUDY
- APPENDIX 2 ENVIRONMENTAL CONDITIONS OF INHALATION CHAMBER IN THE 2-WEEK INHALATION STUDY OF METHYL ACRYLATE
- APPENDIX 3 METHODS, UNITS AND DECIMAL PLACE FOR HEMATOLOGY AND BIOCHEMISTRY IN THE 2-WEEK INHALATION STUDY OF METHYL ACRYLATE

**APPENDIX 1 1**

**IDENTITY OF METHYL ACRYLATE IN THE 2-WEEK  
INHALATION STUDY**

## IDENTITY OF METHYL ACRYLATE

Test Substance : Methyl acrylate (Wako Pure Chemical Industries, Ltd.)

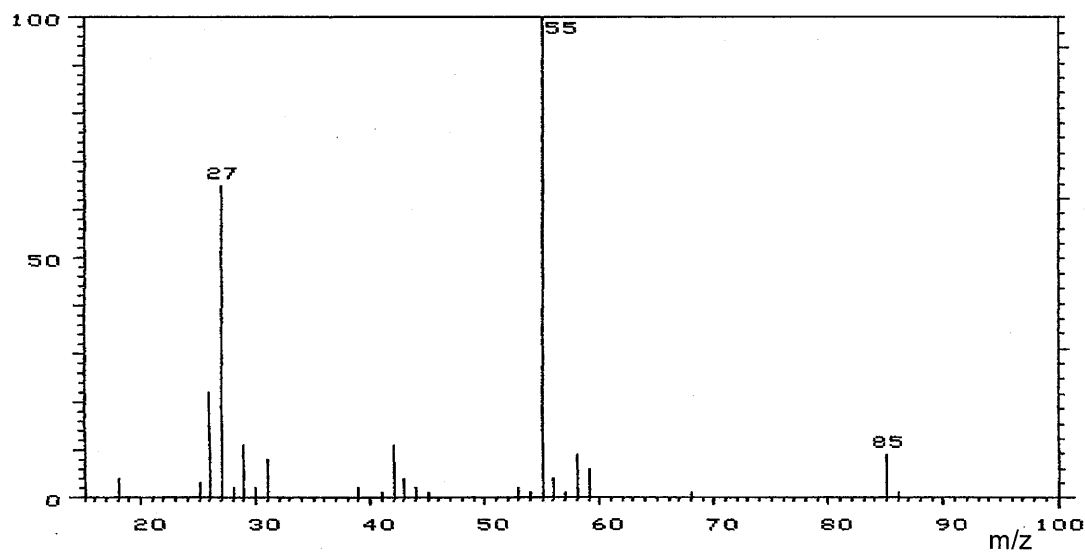
Lot No. : DCE1892

Mass Spectrometry

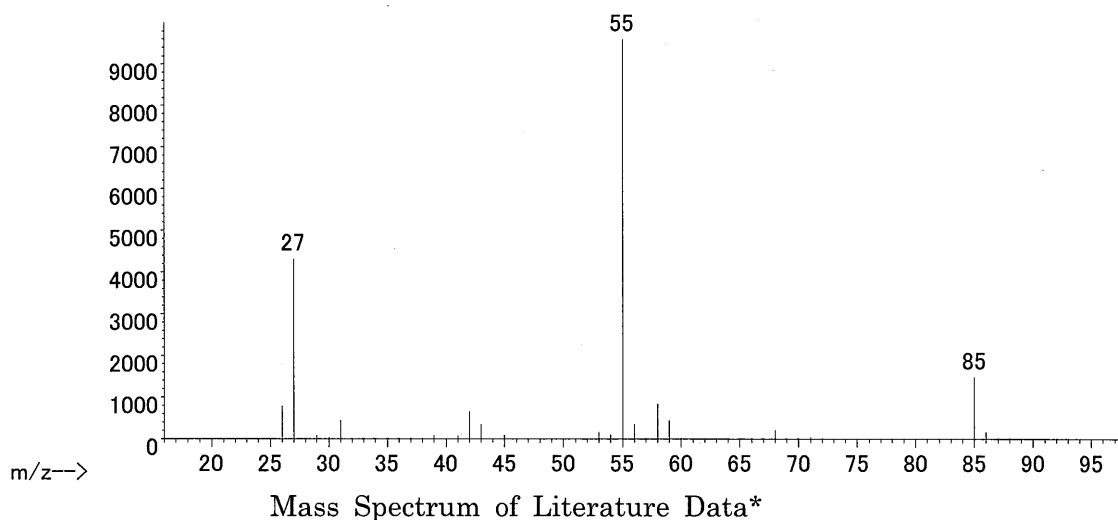
Instrument : Hitachi M-80B Mass Spectrometer

Ionization : EI (Electron Ionization)

Ionization Voltage : 70eV



abundance



Result: The mass spectrum was consistent with literature spectrum.

(\*McLafferty FW, ed. 1994. Wiley Registry of Mass Spectral Data. 6th ed. New York, NY:John Wiley and Sons.)

2. Conclusion: The test substance was identified as methyl acrylate by mass spectrum.

**APPENDIX 1 2**

**STABILITY OF METHYL ACRYLATE IN THE 2-WEEK  
INHALATION STUDY**

## STABILITY OF METHYL ACRYLATE

Test Substance : Methyl acrylate (Wako Pure Chemical Industries, Ltd.)

Lot No. : DCE1892

## 1. Gas Chromatography

Instrument : Agilent Technologies 5890A Gas Chromatograph

Column : INNOWAX (0.53 mm $\phi$   $\times$  60 m)

Column Temperature : 78  $^{\circ}$ C

Flow Rate : 5 mL/min

Detector : FID (Flame Ionization Detector)

Injection Volume : 1  $\mu$ L

Date Analyzed	Peak No.	Retention Time (min)	Area (%)
2012.02.27	1	4.712	100
2012.03.23	1	4.703	100

Result: Gas chromatography indicated one major peak (peak No.1) analyzed on 2012.2.27 and one major peak (peak No.1) analyzed on 2012.3.23. No new trace impurity peak in the test substance analyzed on 2012.3.23 was detected.

2. Conclusion: The test substance was stable for the period that the test substance had been used for the study.

**APPENDIX 2**

**ENVIRONMENTAL CONDITIONS OF INHALATION CHAMBER  
IN THE 2-WEEK INHALATION STUDY  
OF METHYL ACRYLATE**

ENVIRONMENTAL CONDITIONS OF INHALATION CHAMBER IN THE 2-WEEK  
INHALATION STUDY OF METHYL ACRYLATE

Group Name	Temperature (°C) Mean ± S.D.	Humidity (%) Mean ± S.D.	Ventilation Rate (L/min) Mean ± S.D.	Air Change (time/h) Mean
Control	22.4 ± 0.2	52.5 ± 0.4	104.6 ± 0.3	12.1
50 ppm	22.3 ± 0.2	56.8 ± 0.4	104.2 ± 0.3	12.0
100 ppm	22.5 ± 0.2	54.3 ± 0.4	104.6 ± 0.4	12.1
200 ppm	22.3 ± 0.2	57.4 ± 0.4	104.4 ± 0.3	12.0
400 ppm	22.5 ± 0.2	53.9 ± 0.4	104.6 ± 0.2	12.1
800 ppm	22.3 ± 0.2	56.3 ± 0.9	104.4 ± 0.3	12.0



## **APPENDIX 3**

**METHODS, UNITS AND DECIMAL PLACE FOR  
HEMATOLOGY AND BIOCHEMISTRY IN THE 2-WEEK  
INHALATION STUDY OF METHYL ACRYLATE**

**METHODS, UNITS AND DECIMAL PLACE FOR HEMATOLOGY AND BIOCHEMISTRY  
IN THE 2-WEEK INHALATION STUDY OF METHYL ACRYLATE**

Item	Method	Unit	Decimal place
<b>Hematology</b>			
Red blood cell (RBC)	Light scattering method <sup>1)</sup>	$\times 10^6/\mu\text{L}$	2
Hemoglobin(Hgb)	Cyanmethemoglobin method <sup>1)</sup>	g/dL	1
Hematocrit(Hct)	Calculated as $\text{RBC} \times \text{MCV} / 10$ <sup>1)</sup>	%	1
Mean corpuscular volume(MCV)	Light scattering method <sup>1)</sup>	fL	1
Mean corpuscular hemoglobin(MCH)	Calculated as $\text{Hgb} / \text{RBC} \times 10$ <sup>1)</sup>	pg	1
Mean corpuscular hemoglobin concentration (MCHC)	Calculated as $\text{Hgb} / \text{Hct} \times 100$ <sup>1)</sup>	g/dL	1
Platelet	Light scattering method <sup>1)</sup>	$\times 10^3/\mu\text{L}$	0
Reticulocyte	Light scattering method <sup>1)</sup>	%	1
White blood cell(WBC)	Light scattering method <sup>1)</sup>	$\times 10^3/\mu\text{L}$	2
Differential WBC	Light scattering method <sup>1)</sup>	%	0
<b>Biochemistry</b>			
Total protein(TP)	Biuret method <sup>2)</sup>	g/dL	1
Albumin (Alb)	BCG method <sup>2)</sup>	g/dL	1
A/G ratio	Calculated as $\text{Alb} / (\text{TP} - \text{Alb})$ <sup>2)</sup>	—	1
T-bilirubin	BOD method <sup>2)</sup>	mg/dL	2
Glucose	GlcK·G-6-PDH method <sup>2)</sup>	mg/dL	0
T-cholesterol	CE·COD·POD method <sup>2)</sup>	mg/dL	0
Triglyceride	MGLP·GK·GPO·POD method <sup>2)</sup>	mg/dL	0
Phospholipid	PLD·ChOD·POD method <sup>2)</sup>	mg/dL	0
Aspartate aminotransferase (AST)	JSCC method <sup>2)</sup>	U/L	0
Alanine aminotransferase (ALT)	JSCC method <sup>2)</sup>	U/L	0
Lactate dehydrogenase (LDH)	JSCC method <sup>2)</sup>	U/L	0
Alkaline phosphatase (ALP)	JSCC method <sup>2)</sup>	U/L	0
$\gamma$ -Glutamyl transpeptidase ( $\gamma$ -GTP)	JSCC method <sup>2)</sup>	U/L	1
Creatine kinase (CK)	JSCC method <sup>2)</sup>	U/L	0
Urea nitrogen	Urease·GLDH method <sup>2)</sup>	mg/dL	1
Sodium	Ion selective electrode method <sup>2)</sup>	mEq/L	0
Potassium	Ion selective electrode method <sup>2)</sup>	mEq/L	1
Chloride	Ion selective electrode method <sup>2)</sup>	mEq/L	0
Calcium	OCPC method <sup>2)</sup>	mg/dL	1
Inorganic phosphorus	PNP·XOD·POD method <sup>2)</sup>	mg/dL	1

1) Automatic blood cell analyzer (ADVIA120 : Siemens Healthcare Diagnostics Inc.)

2) Automatic analyzer (Hitachi 7080 : Hitachi, Ltd.)