

N,N-ジメチルアセトアミドのマウスを用いた
吸入による2週間毒性試験報告書

試験番号：0707

APPENDICES

APPENDICES

- APPENDIX 1-1 IDENTITY OF *N,N*-DIMETHYLACETAMIDE IN THE 2-WEEK INHALATION STUDY
- APPENDIX 1-2 STABILITY OF *N,N*-DIMETHYLACETAMIDE IN THE 2-WEEK INHALATION STUDY
- APPENDIX 2 ENVIRONMENTAL CONDITIONS OF INHALATION CHAMBER IN THE 2-WEEK INHALATION STUDY OF *N,N*-DIMETHYL-ACETAMIDE
- APPENDIX 3 METHODS, UNITS AND DECIMAL PLACE FOR HEMATOLOGY AND BIOCHEMISTRY IN THE 2-WEEK INHALATION STUDY OF *N,N*-DIMETHYLACETAMIDE

APPENDIX 1 - 1

IDENTITY OF *N,N*-DIMETHYLACETAMIDE
IN THE 2-WEEK INHALATION STUDY

IDENTITY OF *N,N*-DIMETHYLACETAMIDE IN THE 2-WEEK INHALATION STUDYTest Substance : *N,N*-Dimethylacetamide (Wako Pure Chemical Industries, Ltd.)

Lot No. : WKE2611

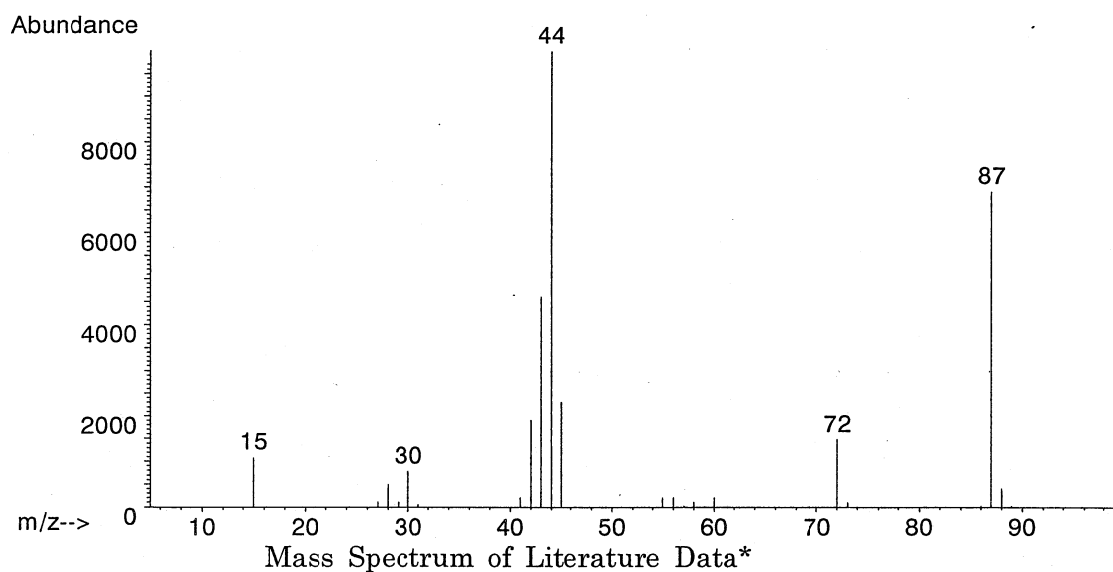
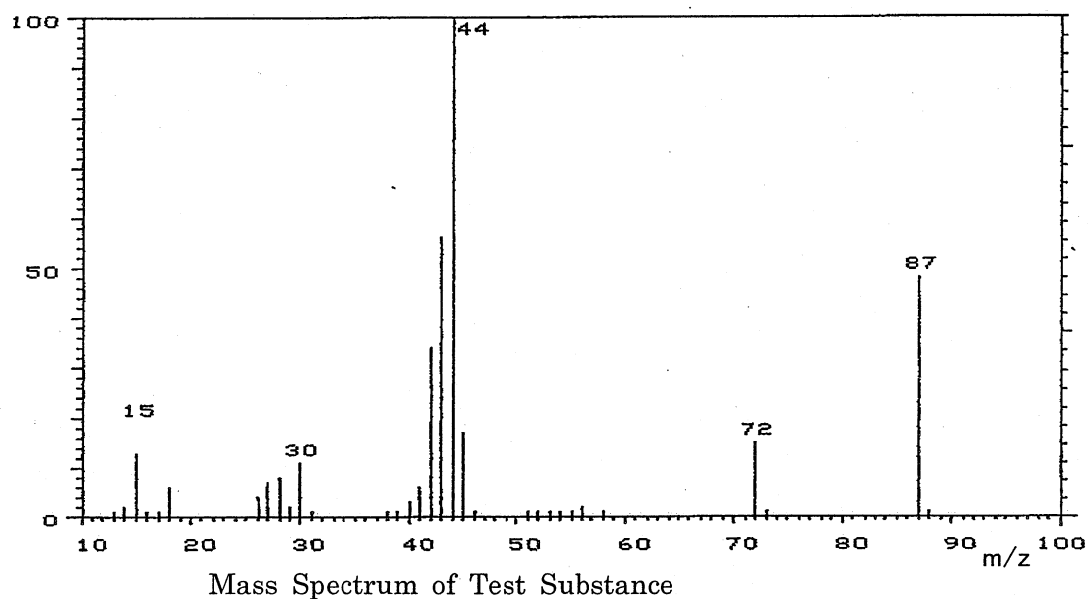
1. Spectral Data

Mass Spectrometry

Instrument : Hitachi M-80B Mass Spectrometer

Ionization : EI (Electron Ionization)

Ionization Voltage : 70eV



Result: The mass spectrum was consistent with literature spectrum.

(*McLafferty FW, ed. 1994. Wiley Registry of Mass Spectral Data. 6th ed. New York, NY:John Wiley and Sons.)

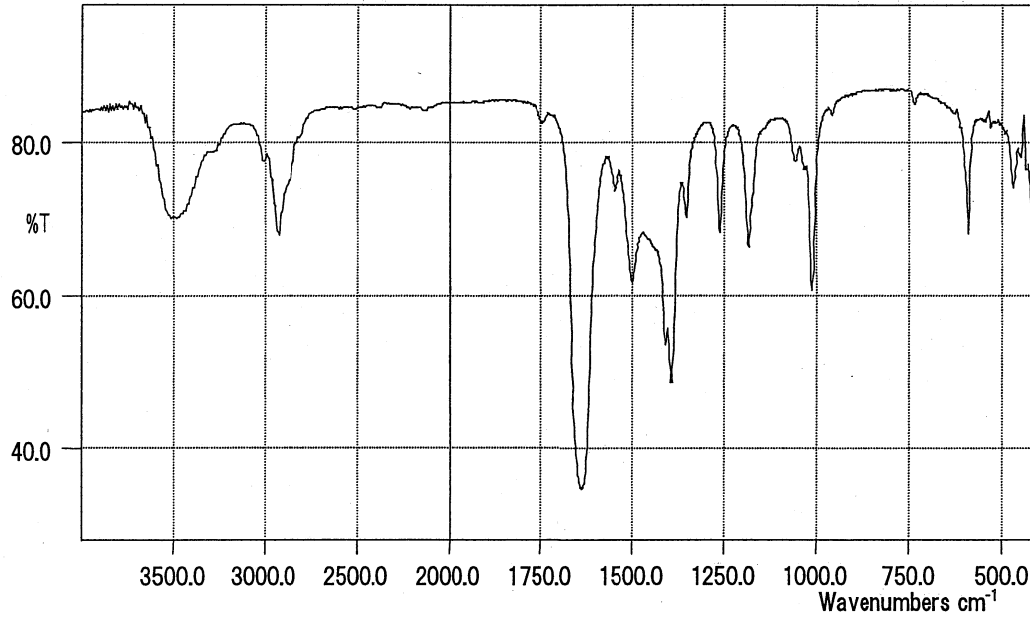
Infrared Spectrometry

Instrument : Shimadzu FTIR-8200PC Infrared Spectrometer

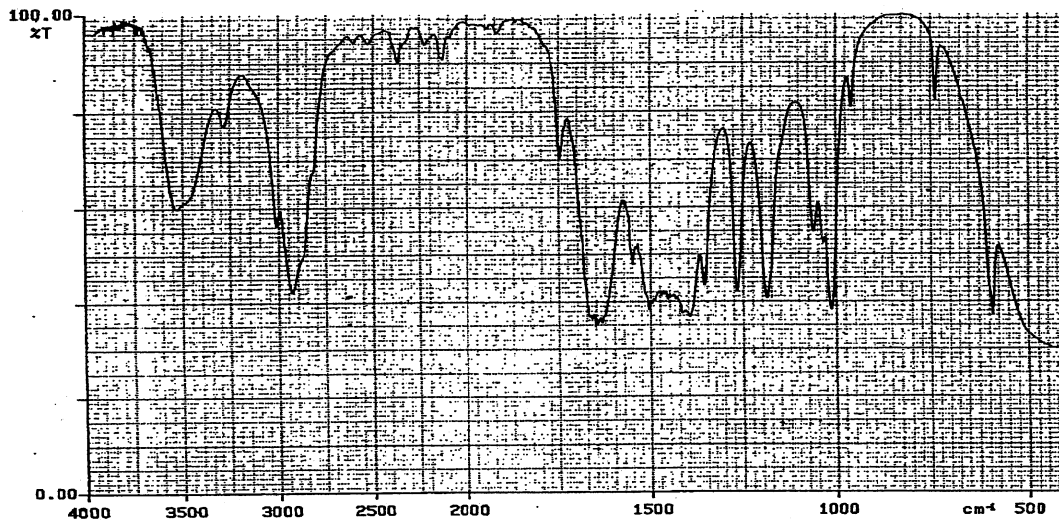
Cell : KBr Liquid Cell

Resolution : 4 cm^{-1}

84 x 150



Infrared Spectrum of Test Substance



Infrared Spectrum of Literature Data*

Result: The infrared spectrum was consistent with literature spectrum.

(*Performed by Wako Pure Chemical Industries, Ltd.)

2. Conclusion: The test substance was identified as *N,N*-dimethylacetamide by mass spectrum and infrared spectrum.

APPENDIX 1 - 2

STABILITY OF *N,N*-DIMETHYLACETAMIDE
IN THE 2-WEEK INHALATION STUDY

STABILITY OF *N,N*-DIMETHYLACETAMIDE IN THE 2-WEEK INHALATION STUDYTest Substance : *N,N*-Dimethylacetamide (Wako Pure Chemical Industries, Ltd.)

Lot No. : WKE2611

1. Gas Chromatography

Instrument : Agilent Technologies 5890A Gas Chromatograph

Column : Methyl Silicone (0.53 mm ϕ \times 60 m)

Column Temperature: 160° C

Flow Rate : 10 mL/min

Detector : FID (Flame Ionization Detector)

Injection Volume : 1 μ L

Date (date analyzed)	Peak No.	Retention Time (min)	Area (%)
2008.03.12	1	3.057	100
2008.03.31	1	3.055	100

Result: Gas chromatography indicated one major peak (peak No.1) analyzed on 2008.3.12 and one major peak (peak No.1) analyzed on 2008.3.31. No new trace impurity peak in the test substance analyzed on 2008.3.31 was detected.

2. Conclusion: The test substance was stable for the period that the test substance had been used for the study.

APPENDIX 2

ENVIRONMENTAL CONDITIONS OF INHALATION CHAMBER IN THE 2-WEEK INHALATION STUDY OF *N,N*-DIMETHYLACETAMIDE

ENVIRONMENTAL CONDITIONS OF INHALATION CHAMBER IN THE 2-WEEK
INHALATION STUDY OF *N,N*-DIMETHYLACETAMIDE

Group Name	Temperature (°C)	Humidity (%)	Ventilation Rate (L/min)		Air Change (time/h)	
	Mean ± S.D.	Mean ± S.D.	Mean ± S.D.*1	Mean ± S.D.*2	Mean*1	Mean*2
Control	21.8 ± 0.6	57.2 ± 1.3	106.6 ± 0.3	212.9 ± 0.5	6.0	12.1
30 ppm	21.7 ± 0.5	53.8 ± 3.3	106.7 ± 0.2	212.8 ± 0.5	6.0	12.0
100 ppm	21.8 ± 0.5	53.5 ± 3.9	106.5 ± 0.1	213.0 ± 0.4	6.0	12.1
300 ppm	21.9 ± 0.4	50.0 ± 5.0	106.4 ± 0.2	212.8 ± 0.5	6.0	12.0
450 ppm	22.1 ± 0.2	47.7 ± 5.2	106.6 ± 0.2	212.7 ± 0.5	6.0	12.0
600 ppm	22.0 ± 0.3	46.6 ± 5.5	106.5 ± 0.3	212.8 ± 0.4	6.0	12.0

*1: Exposure period

*2: After exposure period

APPENDIX 3

METHODS, UNITS AND DECIMAL PLACE FOR
HEMATOLOGY AND BIOCHEMISTRY IN THE 2-WEEK
INHALATION STUDY OF *N,N*-DIMETHYLACETAMIDE

METHODS, UNITS AND DECIMAL PLACE FOR HEMATOLOGY AND BIOCHEMISTRY
IN THE 2-WEEK INHALATION STUDY OF *N,N*-DIMETHYLACETAMIDE

Item	Method	Unit	Decimal place
Hematology			
Red blood cell (RBC)	Light scattering method ¹⁾	$\times 10^6/\mu\text{L}$	2
Hemoglobin(Hgb)	Cyanmethemoglobin method ¹⁾	g/dL	1
Hematocrit(Hct)	Calculated as $\text{RBC} \times \text{MCV}/10$ ¹⁾	%	1
Mean corpuscular volume(MCV)	Light scattering method ¹⁾	fL	1
Mean corpuscular hemoglobin(MCH)	Calculated as $\text{Hgb}/\text{RBC} \times 10$ ¹⁾	pg	1
Mean corpuscular hemoglobin concentration (MCHC)	Calculated as $\text{Hgb}/\text{Hct} \times 100$ ¹⁾	g/dL	1
Platelet	Light scattering method ¹⁾	$\times 10^3/\mu\text{L}$	0
Reticulocyte	Light scattering method ¹⁾	%	1
White blood cell(WBC)	Light scattering method ¹⁾	$\times 10^3/\mu\text{L}$	2
Biochemistry			
Total protein(TP)	Biuret method ²⁾	g/dL	1
Albumin (Alb)	BCG method ²⁾	g/dL	1
A/G ratio	Calculated as $\text{Alb}/(\text{TP} - \text{Alb})$ ²⁾	—	1
T-bilirubin	Azobilirubin method ²⁾	mg/dL	2
Glucose	GlcK·G-6-PDH method ²⁾	mg/dL	0
T-cholesterol	CE·COD·POD method ²⁾	mg/dL	0
Triglyceride	MGLP·GK·GPO·POD method ²⁾	mg/dL	0
Phospholipid	PLD·ChOD·POD method ²⁾	mg/dL	0
Aspartate aminotransferase (AST)	JSCC method ²⁾	IU/L	0
Alanine aminotransferase (ALT)	JSCC method ²⁾	IU/L	0
Lactate dehydrogenase (LDH)	SFBC method ²⁾	IU/L	0
Alkaline phosphatase (ALP)	GSCC method ²⁾	IU/L	0
γ -Glutamyl transpeptidase (γ -GTP)	JSCC method ²⁾	IU/L	0
Creatine kinase (CK)	JSCC method ²⁾	IU/L	0
Urea nitrogen	Urease·GLDH method ²⁾	mg/dL	1
Sodium	Ion selective electrode method ²⁾	mEq/L	0
Potassium	Ion selective electrode method ²⁾	mEq/L	1
Chloride	Ion selective electrode method ²⁾	mEq/L	0
Calcium	OCPC method ²⁾	mg/dL	1
Inorganic phosphorus	PNP·XOD·POD method ²⁾	mg/dL	1

1) Automatic blood cell analyzer (ADVIA120 : Siemens Healthcare Diagnostics Inc.)

2) Automatic analyzer (Hitachi 7080 : Hitachi,Ltd.)