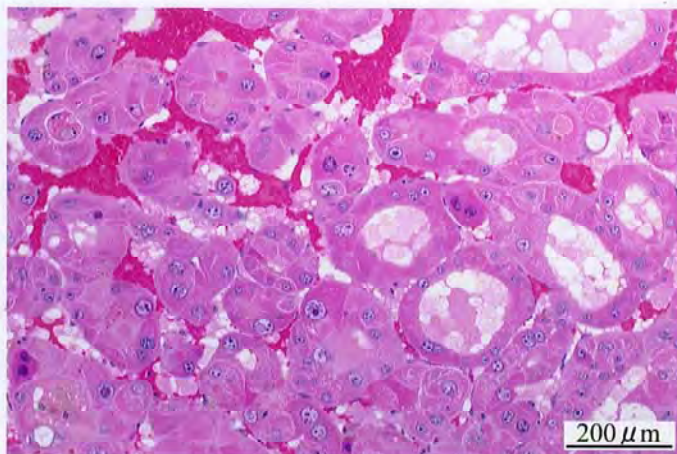


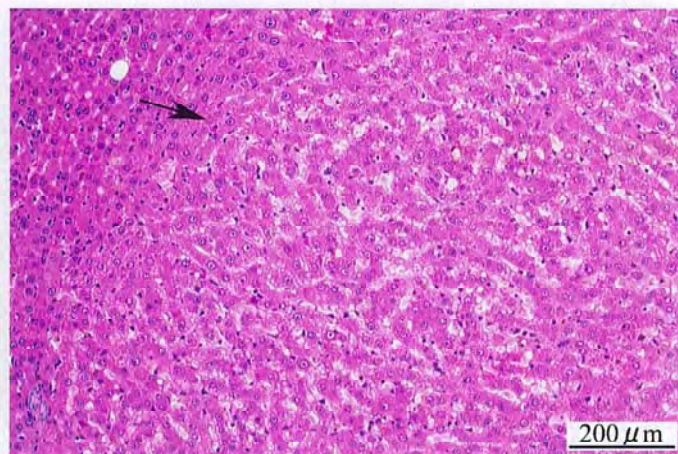
1-クロロ-2-ニトロベンゼンのラットを用いた
経口投与によるがん原性試験（混餌試験）報告書

試験番号：0461

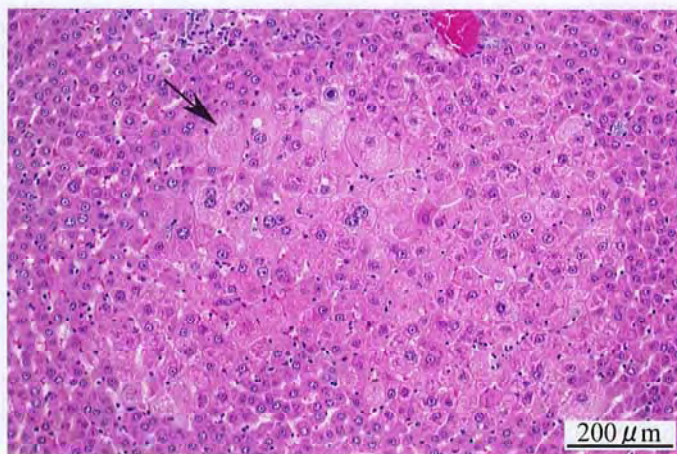
PHOTOGRAPHS



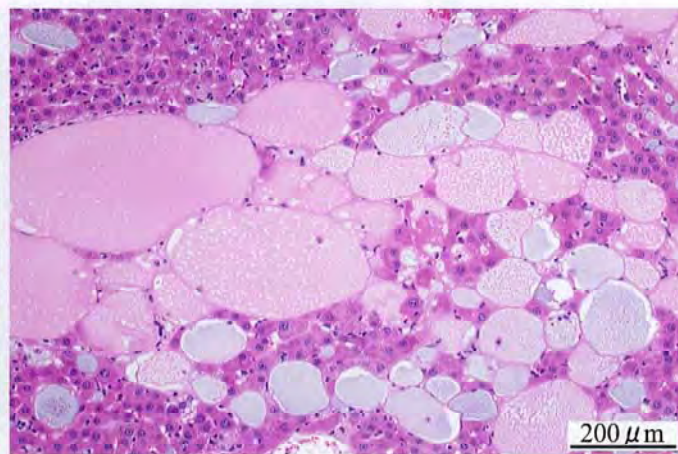
Photograph 1
Liver: Hepatocellular carcinoma
Rat, Female, 2000 ppm, Animal No. 0461-2345 (H&E)



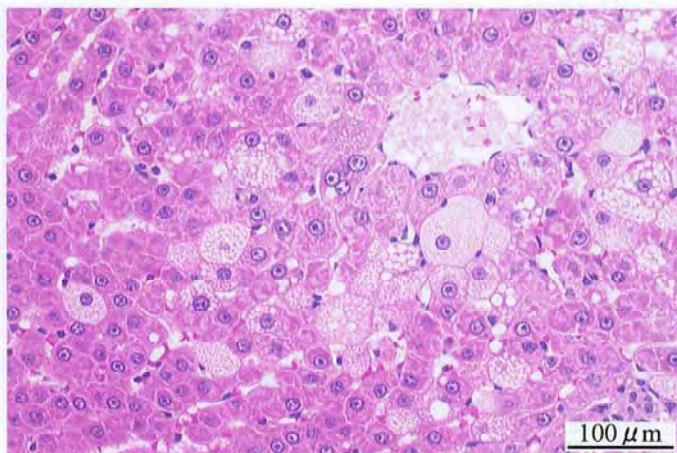
Photograph 2
Liver: Hepatocellular adenoma (Arrow)
Rat, Male, 400 ppm, Animal No. 0461-1216 (H&E)



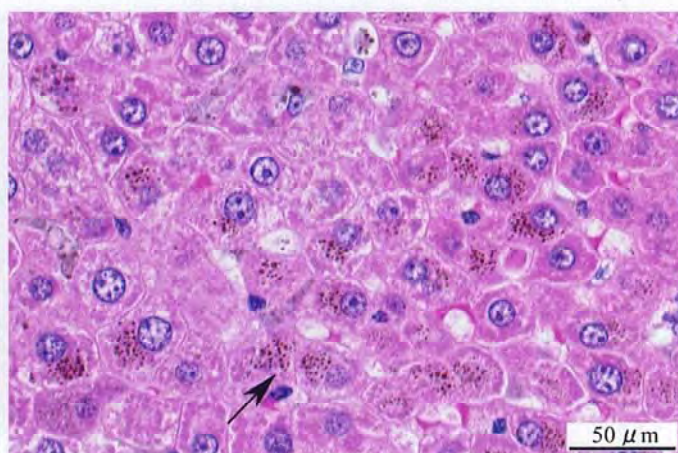
Photograph 3
Liver: Acidophilic cell focus (Arrow)
Rat, Female, 2000 ppm, Animal No. 0461-2311 (H&E)



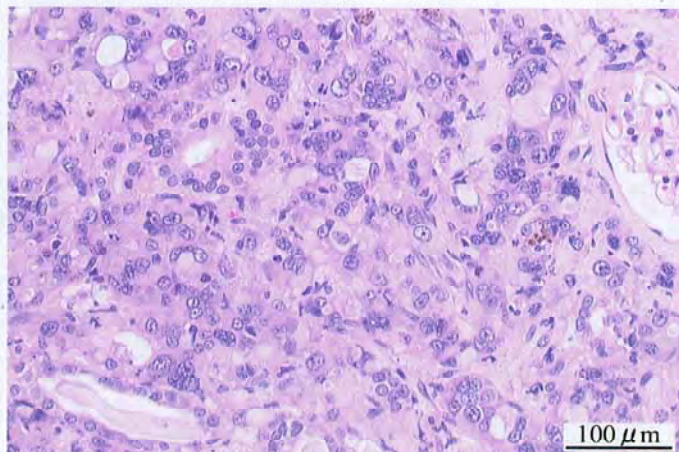
Photograph 4
Liver: Spongiosis hepatis
Rat, Male, 400 ppm, Animal No. 0461-1231 (H&E)



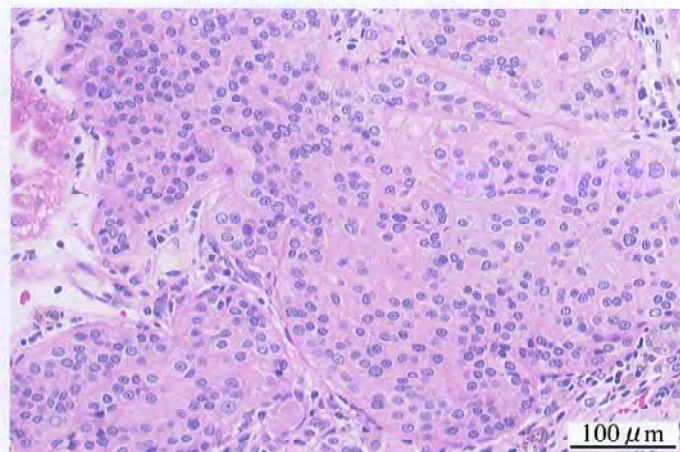
Photograph 5
Liver: Hydropic change: central
Rat, Female, 2000 ppm, Animal No. 0461-2304 (H&E)



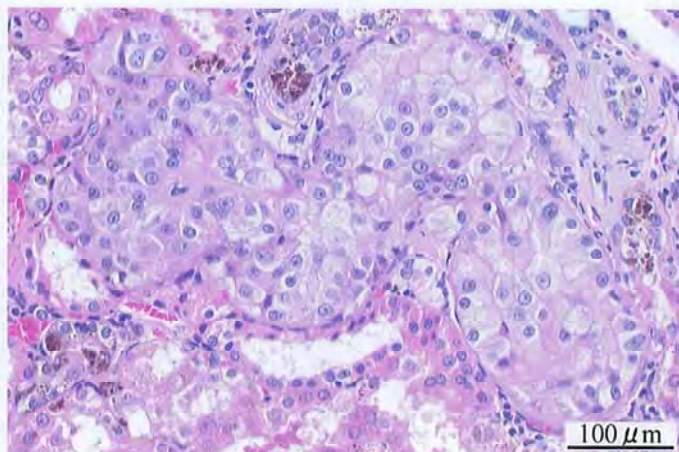
Photograph 6
Liver: Deposit of brown pigment (Arrow)
Rat, Female, 2000 ppm, Animal No. 0461-2323 (H&E)



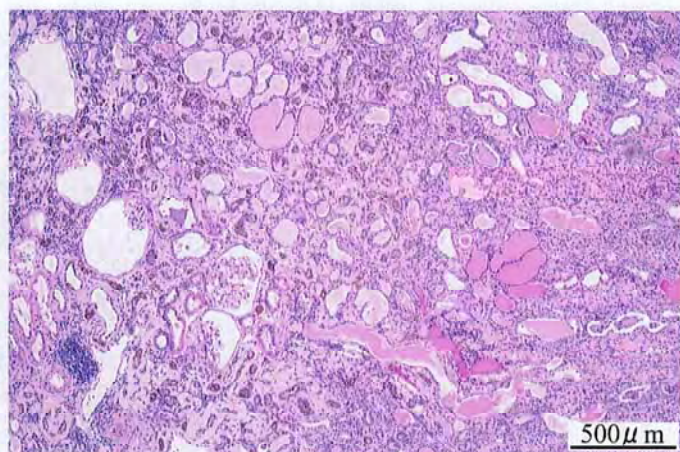
Photograph 7
Kidney: Renal cell carcinoma
Rat, Male, 2000 ppm, Animal No. 0461-1319 (H&E)



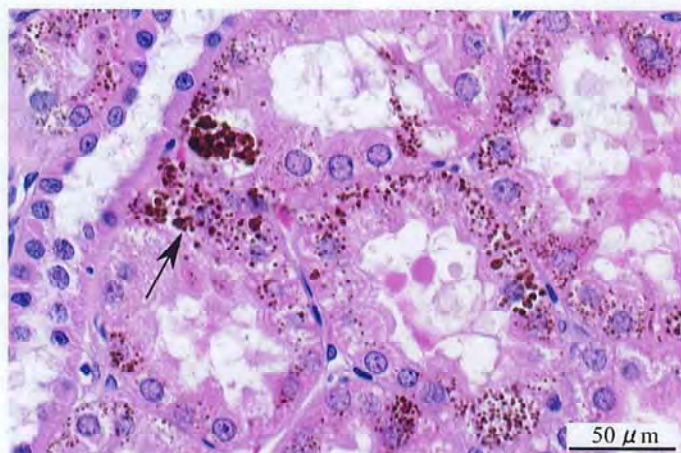
Photograph 8
Kidney: Renal cell adenoma
Rat, Female, 2000 ppm, Animal No. 0461-2341 (H&E)



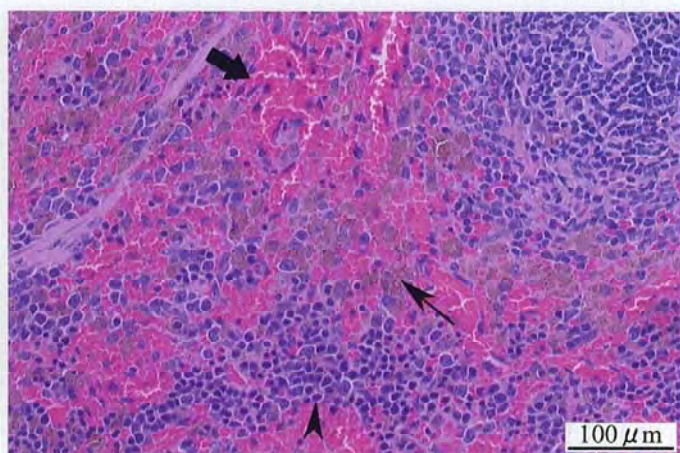
Photograph 9
Kidney: Atypical tubule hyperplasia
Rat, Female, 2000 ppm, Animal No. 0461-2336 (H&E)



Photograph 10
Kidney: Chronic nephropathy
Rat, Male, 2000 ppm, Animal No. 0461-1312 (H&E)



Photograph 11
Kidney: Deposit of brown pigment: proximal tubule (Arrow)
Rat, Female, 2000 ppm, Animal No. 0461-2336 (H&E)



Photograph 12
Spleen: Deposit of hemosiderin (Arrow), increased extramedullary hematopoiesis (Arrowhead) and engorgement of erythrocyte (Widearrow)
Rat, Female, 2000 ppm, Animal No. 0461-2345 (H&E)