

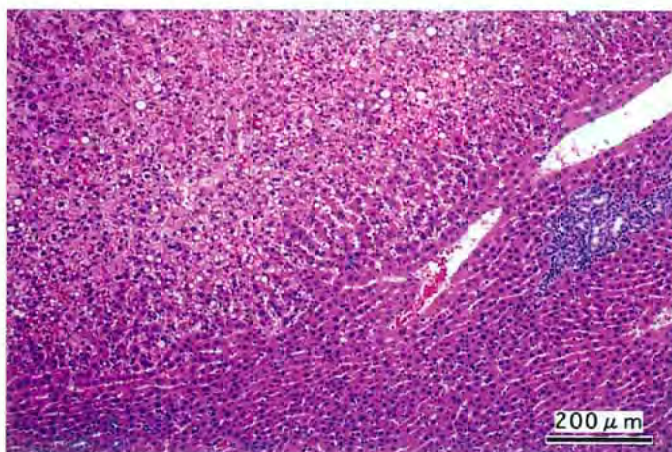
1,4-ジクロロ-2-ニトロベンゼンのラットを用いた
経口投与によるがん原性試験(混餌試験)報告書

試験番号：0328

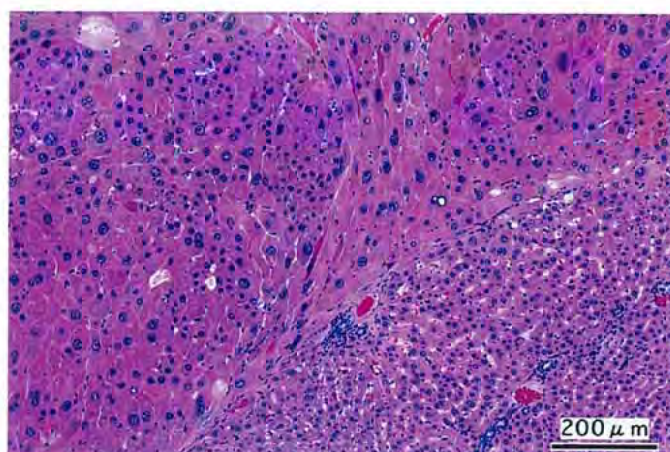
PHOTOGRAPHS

PHOTOGRAPHS

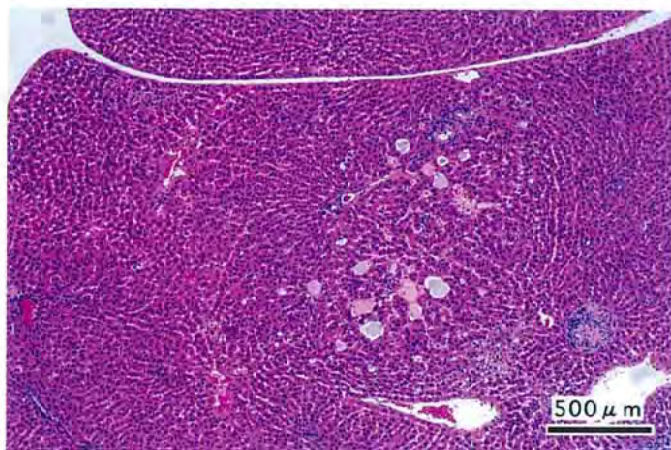
- PHOTOGRAPH 1 LIVER: HEPATOCELLULAR ADENOMA,
RAT, MALE, 2000ppm, ANIMAL NO. 0328-1309 (H&E)
- PHOTOGRAPH 2 LIVER: HEPATOCELLULAR CARCINOMA,
RAT, MALE, 2000ppm, ANIMAL NO. 0328-1338 (H&E)
- PHOTOGRAPH 3 LIVER: BASOPHILIC CELL FOCUS,
RAT, MALE, 2000ppm, ANIMAL NO. 0328-1306 (H&E)
- PHOTOGRAPH 4 ZYMBAL GLAND: ADENOMA,
RAT, MALE, 2000ppm, ANIMAL NO. 0328-1329 (H&E)
- PHOTOGRAPH 5 KIDNEY: RENAL CELL ADENOMA,
RAT, MALE, 2000ppm, ANIMAL NO. 0328-1345 (H&E)
- PHOTOGRAPH 6 KIDNEY: RENAL CELL CRCINOMA,
RAT, MALE, 2000ppm, ANIMAL NO. 0328-1320 (H&E)
- PHOTOGRAPH 7 KIDNEY: CHRONIC NEPHROPATHY,
RAT, MALE, 2000ppm, ANIMAL NO. 0328-1323 (H&E)
- PHOTOGRAPH 8 KIDNEY: (A) UROTHELIAL HYPERPLASIA
(B) MINERALIZATION: PAPILLA,
RAT, MALE, 2000ppm, ANIMAL NO. 0328-1323 (H&E)



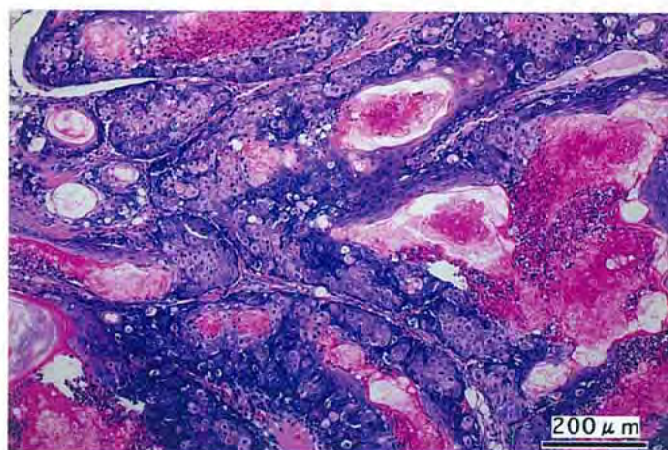
PHOTOGRAPH. 1



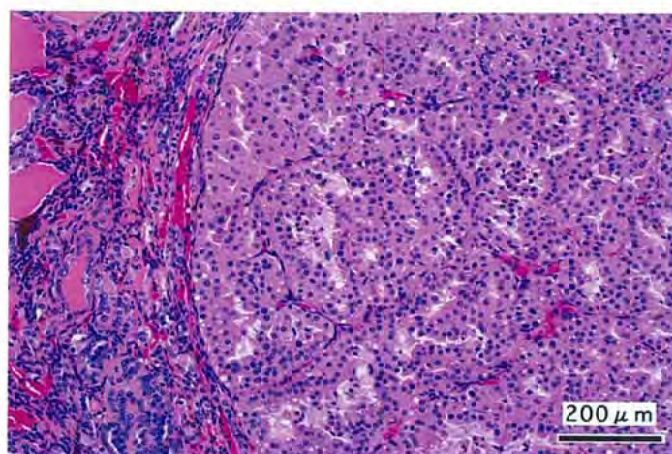
PHOTOGRAPH. 2



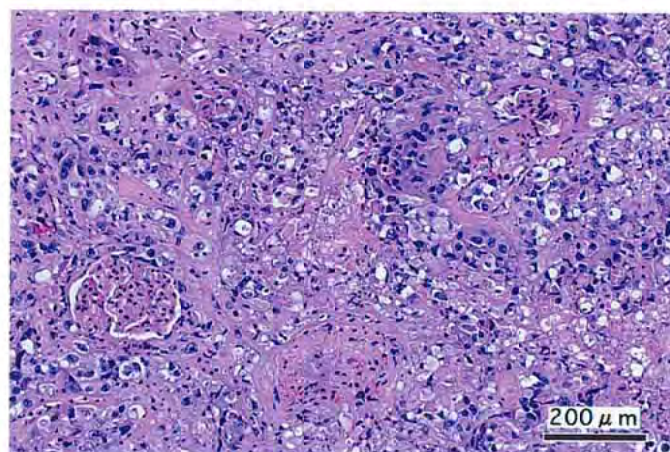
PHOTOGRAPH. 3



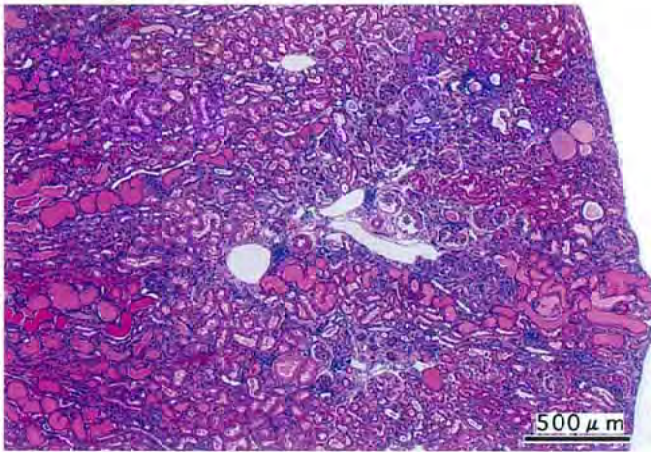
PHOTOGRAPH. 4



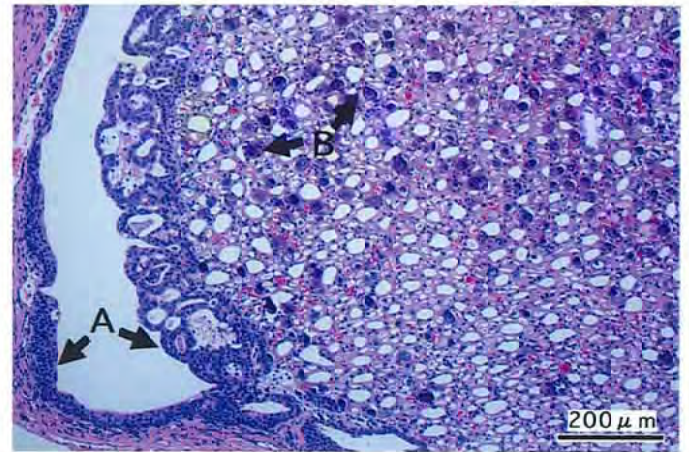
PHOTOGRAPH. 5



PHOTOGRAPH. 6



PHOTOGRAPH. 7



PHOTOGRAPH. 8