

5'-[Bis(2-acetoxyethyl)amino]-2'-(2-bromo-4,6-dinitrophenylazo)-4'-methoxyacetanilide  
 [5'-[ビス(2-アセトキシエチル)アミノ]-2'-(2-ブ`ロモ-4,6-ジ`ニトロフェニルアゾ)-4'-メトキシアセトアニリド]

(C9304-1/2)

Chemical Name; 5'-[Bis(2-acetoxyethyl)amino]-2'-(2-bromo-4,6-dinitrophenylazo)-4'-methoxyacetanilide

Synonym ; N-[2-[Bis[2-(acetyloxy)ethyl]amino]-5-[(2-bromo-4,6-dinitrophenyl)azo]-3-methoxyphenyl]acetamide  
 N-[2-[ビス[2-(アセチルオキシ)エチル]アミノ]-5-[(2-ブ`ロモ-4,6-ジ`ニトロフェニルアゾ)-3-メトキシフェニル]アセトアニリド

Molecular Weight ; 625.39

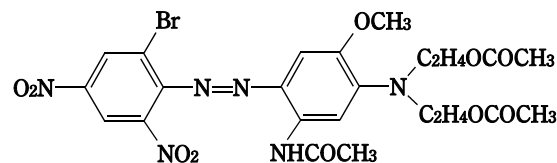
Melting Point ; - ℃

Boiling Point ; - ℃

Flashing Point ; - ℃

Molecular Formula; C<sub>23</sub>H<sub>25</sub>BrN<sub>6</sub>O<sub>10</sub>

**Chemical Structure**



CAS No. ; 3618-72-2 , 75497-74-4

MITI No. ; (3)-3974

ML No. ; 4-(13)-168

Specified Chemical Substances; -

Source of Substance; -

Lot No. ; -

Purity ; -

Vehicle ; DMSO

Experimental Data without Metabolic Activation

Substance	Treatment		No. of Metaphase	Polyploid (%)	Judge-ment	Cell with Structural Chromosome Aberration (%)							Judge-ment
	Time (h)	Concentration (mg/ml)				Chromatid					Total		
						Gap	CTB	CTE	CSB	CSE	-G	+G	
DMSO	24		200	1.5	-	0.0	0.5	0.5	0.0	0.0	1.0	1.0	-
	48		200	0.0	-	0.0	0.0	0.0	0.0	0.0	0.0	0.0	-
Test Chemical	24	0.01	200	0.5	-	0.5	0.5	2.0	0.0	0.0	2.5	3.0	-
		0.015	200	0.5	-	0.0	2.0	13.5	0.0	0.0	14.5	14.5	+
		0.02	200	0.0	-	3.0	15.5	35.5	0.0	0.0	39.5	39.5	+
		0.025	200	1.5	-	7.0	27.0	53.5	0.0	0.0	58.0	58.0	+
		0.03	200				No observation for metaphase						
		48	0.01	200	0.0	-	0.0	0.0	0.0	0.0	0.0	0.0	0.0
Positive Control [MMC]	48	0.015	200	1.5	-	0.0	0.5	2.0	0.0	0.0	2.5	2.5	-
		0.02	200	1.0	-	0.0	2.0	9.0	0.0	0.0	9.5	9.5	±
		0.025	200	0.5	-	1.0	6.5	34.5	0.0	0.5	36.5	36.5	+
		0.03	200	1.5	-	2.5	8.5	31.5	0.0	0.5	33.0	33.0	+
		0.00004	200	0.0	-	0.5	7.0	31.5	0.0	0.0	34.0	34.0	+
0.00004	200	0.0	-	1.0	7.0	40.0	0.0	1.0	45.0	45.0	+		

Judgement for

Chromosomal Aberration in CHL ; **Positive**

IARC Evaluation

; not yet cited

Experimental Data with Metabolic Activation

Treatment			No. of Metaphase	Polyploid (%)	Judge- ment	Cell with Structural Chromosome Aberration (%)							Judge- ment
Substance	S9 mix	Concent- ration (mg/ml)				Chromatid		Chromosome		Total			
						CTB	CTE	CSB	CSE	-G	+G		
DMSO	-		200	1.5	-	0.0	0.5	0.0	0.0	0.0	0.5	0.5	-
	+		200	0.5	-	0.0	0.0	0.5	0.0	0.0	0.5	0.5	-
Test Chemical	-	0.1				No observation for metaphase							
		0.2				No observation for metaphase							
		0.3 *				No observation for metaphase							
		0.4 *				No observation for metaphase							
		0.5 *				No observation for metaphase							
	+	0.1	200	0.0	-	0.0	0.0	0.0	0.0	0.0	0.0	0.0	-
	0.2	200	1.0	-	0.0	0.5	7.0	0.0	0.0	7.5	7.5	±	
	0.3 *	200	0.5	-	0.0	1.0	9.0	0.0	0.0	9.0	9.0	±	
	0.4 *	200	0.5	-	0.0	0.5	2.5	0.0	0.0	3.0	3.0	-	
	0.5 *	200	0.0	-	0.0	0.5	2.0	0.0	0.0	2.5	2.5	-	
Positive Control [B(a)P]	-	0.01	200	0.5	-	0.0	0.0	0.5	0.0	0.0	0.5	0.5	-
	+	0.01	200	0.5	-	0.5	3.5	37.0	0.0	0.0	38.0	38.0	+

\* Test chemical was precipitated.