

[2'-(4-クロロ-3-シアノ-5-ホルミル-2-チエニルアゾ)-5'-ジエチルアミノアセトアニリド]

Chemical Name; 2'-(4-Chloro-3-cyano-5-formyl-2-thienylazo)-5'-diethylaminoacetanilide

Synonym ; N-[2-[(4-Chloro-3-cyano-5-formyl-2-thienyl)azo]-5-(diethylamino)phenyl]acetamide
N-[2-[(4-クロロ-3-シアノ-5-ホルミル-2-チエニルアゾ)-5-(ジエチルアミノ)フェニル]アセトアニリド]

Molecular Weight ; 403.88

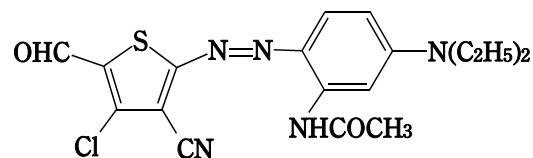
Melting Point ; ≥ 300 °C

Boiling Point ; - °C

Flashing Point ; - °C

Molecular Formula; C₁₈H₁₈ClN₅O₂S

Chemical Structure



CAS No. ; 104366-25-8

MITI No. ; [(5)-6191]

ML No. ; 8-(6)-145

Specified Chemical Substances; -

Source of Substance; -

Lot No. ; -

Purity ; -

Vehicle ; DMSO

Experimental Data without Metabolic Activation

Substance	Treatment		No. of Metaphase	Polyploid (%)	Judgement	Cell with Structural Chromosome Aberration (%)							
	Time (h)	Concentration (mg/ml)				Cell with Structural Chromosome Aberration (%)							
						Gap	Chromatid		Chromosome		Total		Judgement
			CTB	CTE	CSB	CSE	-G	+G					
DMSO	24		200	0.5	-	0.0	0.0	0.0	0.0	0.0	0.0	0.0	-
	48		200	0.0	-	0.0	0.0	0.0	0.0	0.0	0.0	0.0	-
Test Chemical	24	0.05	200	0.0	-	0.0	0.5	2.5	0.0	0.0	2.5	2.5	-
		0.1	200	0.0	-	0.0	1.0	1.5	0.0	0.0	2.5	2.5	-
		0.2 *	200	0.5	-	2.0	6.0	13.0	0.0	0.0	18.0	19.0	+
		0.3 *	146	0.0	-	1.4	11.6	30.1	0.0	0.0	37.7	37.7	+
		0.4 *				No observation for metaphase							
	48	0.05	200	1.0	-	0.0	0.0	0.0	0.0	0.0	0.0	0.0	-
0.1		200	0.0	-	0.0	1.0	1.5	0.0	0.0	2.0	2.0	-	
0.2 *		186	2.2	-	0.5	0.5	4.3	0.0	0.0	4.8	5.4	±	
0.3 *					No observation for metaphase								
	0.4 *				No observation for metaphase								
Positive Control	24	0.00004	200	1.5	-	2.0	3.5	25.0	0.0	0.0	27.5	28.0	+
[MMC]	48	0.00004	200	1.0	-	1.0	7.0	29.0	0.0	0.0	32.5	32.5	+

* Test chemical was precipitated.

Judgement for

Chromosomal Aberration in CHL ; **Positive**

IARC Evaluation

; not yet cited

Experimental Data with Metabolic Activation

Treatment			No. of Metaphase	Polyploid (%)	Judge- ment	Cell with Structural Chromosome Aberration (%)							Judge- ment	
Substance	S9 mix	Concent- ration (mg/ml)				Chromatid		Chromosome		Total				
						Gap	CTB	CTE	CSB	CSE	-G	+G		
DMSO	-		200	0.0	-	0.0	0.5	0.0	0.0	0.0	0.5	0.5	-	
	+		200	1.0	-	0.0	0.5	0.0	0.0	0.0	0.5	0.5	-	
Test Chemical	-	0.13 *	200	0.0	-	0.5	2.0	2.5	0.0	0.0	4.0	4.0	-	
		0.25 *	200	0.0	-	0.5	1.0	2.0	0.0	0.0	2.5	3.0	-	
		0.5 *	200	3.0	-	0.5	0.5	4.0	0.0	0.0	4.5	5.0	±	
		1.0 *	200	0.0	-	0.5	3.0	7.0	0.0	0.0	9.5	10.0	+	
		2.0 *	200	0.0	-	6.0	17.0	27.5	0.0	0.0	36.5	37.0	+	
	+	0.13 *	200	0.0	-	0.0	0.0	0.0	0.0	0.0	0.0	0.0	0.0	-
		0.25 *	200	0.5	-	0.0	0.5	0.5	0.0	0.0	1.0	1.0	-	
		0.5 *	200	0.0	-	0.0	0.0	0.0	0.0	0.0	0.0	0.0	-	
		1.0 *	200	0.0	-	0.0	0.0	0.0	0.0	0.0	0.0	0.0	-	
		2.0 *	200	1.5	-	0.0	0.0	2.0	0.0	0.0	2.0	2.0	-	
Positive Control [B(a)P]	-	0.01	200	0.0	-	0.0	0.5	1.5	0.0	0.0	2.0	2.0	-	
	+	0.01	200	0.5	-	0.5	3.5	36.5	0.0	0.0	37.0	37.0	+	

* Test chemical was precipitated.